

SELF-LIGATING BRACKET SYSTEM



Carriere® 2 - 7
Self-Ligating Brackets

Carriere Distalizer™ 8 - 12
Class II Correction Appliance



THE CARRIERE SELF-LIGATING Bracket System shifting the way you think about orthodontics

Takes clinical performance and patient outcomes to a new level.

The *Carriere* Self-Ligating Bracket is one of the fastest growing self-ligating brackets on the market today. It is specifically designed to meet your goal of low friction and low force by providing a “freedom of fit” in the bracket and archwire interface:

- In the body of the bracket, the mesial and distal edges of the slot have been carefully rounded for free sliding.
- The bracket archwire interface has a passive four-wall design that, with low super-elastic archwires, provides a free but controlled, synergistic action.

The “passive” orthodontic treatment philosophy can be “activated” when there is interest in using more force by using larger rectangular archwires.

Dual-Lock Fasteners in the Bracket Face

Cap opens to the incisal/occlusal edge allowing the cap to always stay in the closed position (e.g. during the mastication movements).

Smooth Labial Surface of the Locking Mechanism

Contoured edges and smooth surfaces provide enhanced patient comfort.

Simple Locking Mechanism

Opens with the Wire Director and Opener Tool and closes securely with finger.



Hooks Available on 3s, 4s and 5s

For maximum versatility.

Torque-In-Base/Compound-Contour

For ultimate precision, control and accurate fit.

Beveled Edges

Mesial and distal edges of the slot have been carefully rounded to reduce friction and enhance sliding mechanics.

Tie Wings

For chain elastics or conventional ligation (if necessary).

The Carriere Self-Ligating Bracket Philosophy

Fast.

Compared with conventional systems, the *Carriere* Self-Ligating Bracket is faster, requires fewer appointments and is more comfortable for your patients. Quick and easy archwire changes and increased time between appointments afford a significant reduction in the number of patients seen per day, increasing practice profitability. Now, active treatment can be reduced by an average of four months.

Natural.

With the *Carriere* Self-Ligating Bracket, teeth are moved naturally with a low-force and low-friction passive system. This “freedom of fit” design stimulates cellular activity without occluding blood vessels in the periodontal ligament, allowing the teeth to actually move more quickly. These light forces are more biologically compatible than traditional, high force brackets and allow for more efficient tooth movement and improved patient comfort.

Gentle.

The *Carriere* Self-Ligating Bracket produces significantly less friction than conventional or active self-ligating appliances. By greatly reducing the force and the pressure, low-force archwires can work to peak expression, thereby stimulating a more biologically compatible tooth movement. This unique low-force approach throughout the treatment means substantially greater patient comfort.

*Harradine NWT: Self-ligating brackets and treatment efficiency, 2001.

SELF-LIGATING BRACKET SYSTEM

CARRIERE® SELF-LIGATING BRACKET SYSTEM

The Carriere Self-Ligating Bracket System Features:

- A simple locking mechanism located in the bracket face, which can be easily opened with an explorer and closed with the touch of finger – offering quick, easy archwire changes.
- A familiar rhomboid shape that allows you to keep your preferred treatment techniques.
- Available in .018 and .022 McLaughlin, Bennett and Trevisi* and .018 and .022 Roth* prescriptions, available with or without hooks.

*Prescription does not imply endorsement by the doctors.

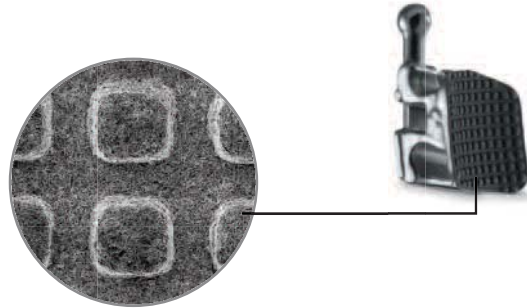


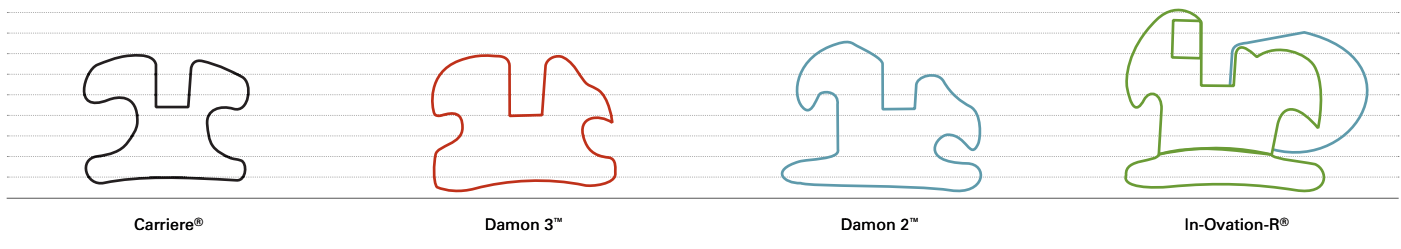
Fig 1 – The Carriere with the LX Difference
Micro-etched surface for increased bond strength. Inset is 100x SEM.

Proprietary Improvements for a Stronger, Easier and Greater Performance.

The Carriere Self-Ligating Bracket with the LX difference will provide you with the following:

- Micro-etched surface for increased bond strength (Fig. 01).
- Lowest profile and less bulk in comparison to Damon 2 & 3™ and In-Ovation-R® (Fig. 02).
- Colour-coded brackets for easier identification.
- Nickel free for increased biocompatibility and acceptance.
- Wire Director and Opener Tool – facilitates easier archwire placement and assists with opening and closing of the gate, REF 201-504W (Fig. 03).

Fig 2 – SLB Profile Comparison



Accessories



Fig 03
Carriere Wire Director and Opener Tool
201-504W



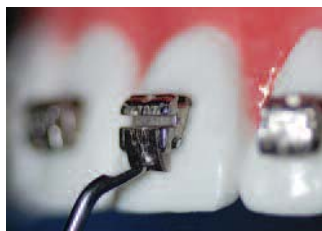
Fig 04
Opti-Mim Bite Guide
Stainless Steel 430-006
Composite 430-007



Fig 05
Rotation Wedge
Silver 400-302
Clear 400-303

CARRIERE® SELF-LIGATING BRACKET SYSTEM

A Simplified Clinical Procedure



Step 01 – Opening Locking Mechanism
Place tip of Wire Director and Opener (or instrument such as an explorer) in opening and apply light incisal/occlusal pressure.



Step 02 – Seating of the Archwire
Use the forked end of a Wire Director and Opener to help seat wire. Fully engage wire before closing the locking mechanism.



Step 03 – Closing Locking Mechanism
Close the locking mechanism by pressing the locking mechanism gingivally with your finger.

CARRIERE SELF-LIGATING BRACKET ALL SETS (5X5)*

Rx	.018	.022	QTY OF SETS	TOTAL BRACKETS	DESCRIPTION
Roth	703-297	703-397	1	20	Set with no hooks
	703-298	703-398	1	20	Set with hooks on 3s
	703-299	703-399	1	20	Set with hooks 3s, 4s, 5s
McLaughlin, Bennett and Trevisi	703-297MC	703-397MC	1	20	Set with no hooks
	703-298MC	703-398MC	1	20	Set with hooks on 3s
	703-299MC	703-399MC	1	20	Set with hooks 3s, 4s, 5s

CARRIERE SELF-LIGATING BRACKETS ALL PRESCRIPTIONS*

	CENTRALS		LATERALS		CUSPIDS		1ST BICUSPIDS		2ND BICUSPIDS	
	TORQUE	ANG.	TORQUE	ANG.	TORQUE	ANG.	TORQUE	ANG.	TORQUE	ANG.
MAXILLARY										
Roth	+12°	+4°	+10°	+8°	-2°	+9°	-7°	0°	-7°	0°
McLaughlin, Bennett and Trevisi	+17°	+4°	+10°	+8°	-7°	+9°	-7°	0°	-7°	0°
MANDIBULAR										
Roth	0°	0°	0°	0°	-11°	+7°	-17°	0°	-20°	0°
McLaughlin, Bennett and Trevisi	-5°	0°	-5°	0°	-6°	+4°	-12°	0°	-17°	0°

.021" x .027" BIO-KINETIX THERMALLY ACTIVATED TITANIUM ARCHWIRES

BIO-KINETIX THERMAL TITANIUM ARCHWIRES

	Pro Form Arch Shape	D-LX Shape Universal (Damon Shape)
	10/pack	Single Pack 10/pack
.021 x .027 Upper	100-876	103-123
.021 x .027 Lower	100-877	

The .021" x .027" Thermal *Bio-Kinetix* Archwire is an excellent finishing wire due to its greater flexibility and minimal stiffness. The cross section fills the bracket slot to fully express the final torque, and correct any rotational needs. Recommended use for this wire is with a .022 slot passive self-ligating bracket system.

The Carriere Self-Ligating Bracket System.

The .021" x .027" Thermal *Bio-Kinetix* Archwire is an excellent choice to use with the *Carriere* Self-Ligating Bracket. The bracket is one of the lowest profile and fastest growing self-ligating brackets on the market today. It is specifically designed to meet your goal of low-friction and low-force by providing greater control in the bracket archwire interface through ultra light forces. In addition, the *Carriere* Self-Ligating Bracket with the LX difference will provide you with the following:



- Micro-etched surface for increased bond strength.
- Lowest profile and less bulk in comparison to *Damon 2* and *3* and *In-Ovation-R*, with smooth labial surface of the locking mechanism, enhancing patient comfort.
- Colour-coded brackets for easier identification.
- Simple locking mechanism that opens with a Wire Director and Opener Tool, facilitating easier archwire placement and assisting with opening and closing of the gate.

*Ortho Organizers' version of Roth or McLaughlin, Bennett, and Trevisi prescriptions is not implied to be an exact version of another system.

SELF-LIGATING BRACKET SYSTEM

CARRIERE® SELF-LIGATING BRACKET SYSTEM

**CARRIERE SELF-LIGATING BRACKETS
ALL PRESCRIPTIONS**

	COLOUR-CODE	TOOTH	TORQUE	ANGULATION	.018 R	.018 L	.022 R	.022 L
MAXILLARY								
Centrals	Black	U1	+12°	+4°	703-207	703-208	703-307	703-308
Centrals	Black	U1	+17°	+4°	703-209	703-210	703-309	703-310
Laterals	Pink	U2	+10°	+8°	703-223	703-224	703-323	703-324
Laterals	Pink	U2	+10°	+8°	703-227	703-228	703-327	703-328
Cuspids	Green	U3	-2°	+9°	703-251	703-252	703-351	703-352
					703-251HK	703-252HK	703-351HK	703-352HK
Cuspids	Green	U3	-7°	+9°	703-253	703-254	703-353	703-354
					703-253HK	703-254HK	703-353HK	703-354HK
Bicuspids	Purple	U4&5s	-7°	0°	703-259	703-260	703-359	703-360
					703-259HK	703-260HK	703-359HK	703-360HK
MANDIBULAR								
Anteriors	Yellow	L1&2s	0°	0°	703-235	703-236	703-335	703-336
Anteriors	Yellow	L1&2s	-6°	0°	703-237	703-238	703-337	703-338
Cuspids	Blue	L3	-6°	+4°	703-271	703-272	703-371	703-372
					703-271HK	703-272HK	703-371HK	703-372HK
Cuspids	Blue	L3	-11°	+7°	703-267	703-268	703-367	703-368
					703-267HK	703-268HK	703-367HK	703-368HK
1st Bicuspids	Gray	L4	-12°	0°	703-287	703-288	703-387	703-388
					703-287HK	703-288HK	703-387HK	703-388HK
1st & 2nd Bicuspids	White	L4&5s	-17°	0°	703-289	703-290	703-389	703-390
					703-289HK	703-290HK	703-389HK	703-390HK
2nd Bicuspids	White	L5	-20°	0°	703-293	703-294	703-393	703-394
					703-293HK	703-294HK	703-393HK	703-394HK

**CARRIERE SELF-LIGATING BRACKETS
MCLAUGHLIN, BENNETT AND TREVISI PRESCRIPTIONS***

	COLOUR-CODE	TOOTH	TORQUE	ANGULATION	.018 R	.018 L	.022 R	.022 L
MAXILLARY								
Centrals	Black	U1	+17°	+4°	703-209	703-210	703-309	703-310
Laterals	Pink	U2	+10°	+8°	703-227	703-228	703-327	703-328
Cuspids	Green	U3	-7°	+9°	703-253	703-254	703-353	703-354
					703-253HK	703-254HK	703-353HK	703-354HK
Bicuspids	Purple	U4&5s	-7°	0°	703-259	703-260	703-359	703-360
					703-259HK	703-260HK	703-359HK	703-360HK
MANDIBULAR								
Anteriors	Yellow	L1&2s	-5°	0°	703-237	703-238	703-337	703-338
Cuspids	Blue	L3	-6°	+4°	703-271	703-272	703-371	703-372
					703-271HK	703-272HK	703-371HK	703-372HK
1st Bicuspids	Grey	L4	-12°	0°	703-287	703-288	703-387	703-387
					703-287HK	703-288HK	703-387HK	703-387HK
2nd Bicuspids	White	L5	-17°	0°	703-289	703-290	703-389	703-390
					703-289HK	703-290HK	703-389HK	703-390HK

*Ortho Organizers' prescription does not imply endorsement by the doctor(s).

CARRIERE® SELF-LIGATING BRACKET SYSTEM

CARRIERE SELF-LIGATING BRACKETS ROTH PRESCRIPTION*

	COLOUR	TOOTH #	TORQUE	ANGULATION	.018 R	.018 L	.022 R	.022 L
MAXILLARY								
Centrals	Black	U1	+12°	+4°	703-207	703-208	703-307	703-308
Laterals	Pink	U2	+10°	+8°	703-223	703-224	703-323	703-324
Cuspids	Green	U3	-2°	+9°	703-251	703-252	703-351	703-352
					703-251HK	703-252HK	703-351HK	703-352HK
Bicuspids	Purple	U4&5s	-7°	0°	703-259	703-260	703-359	703-360
					703-259HK	703-260HK	703-359HK	703-360HK
MANDIBULAR								
Anteriors	Yellow	L1&2s	0°	0°	703-235	703-236	703-335	703-336
Cuspids	Blue	L3	-11°	+7°	703-267	703-268	703-367	703-368
					703-267HK	703-268HK	703-367HK	703-368HK
1st Bicuspids	White	L4	-17°	0°	703-289	703-290	703-389	703-390
					703-289HK	703-290HK	703-389HK	703-390HK
2nd Bicuspids	Red	L5	-20°	0°	703-293	703-294	703-393	703-394
					703-293HK	703-294HK	703-393HK	703-394HKVV

CARRIERE SELF-LIGATING BRACKET SYSTEM RECOMMENDED ARCHWIRE SEQUENCES

.018	PRO FORM™ ARCH FORM		D-LX™ FORM
	UPPER	LOWER	UNIVERSAL**
INITIAL	10/PK		10/PK
.014 Dimpled <i>Bio-Kinetix</i> Thermally Activated <i>Nitanium</i> ® Archwire, <i>Pro Form</i> Arch Form	100-852DM	100-853DM	—
.014 <i>Bio-Kinetix Plus</i> Thermally Activated <i>Nitanium</i> Archwire, <i>D-LX</i> Arch Form	—	—	103-101
INTERMEDIATE	10/PK		10/PK
.014 x .025 Dimpled <i>Bio-Kinetix</i> Thermally Activated <i>Nitanium</i> Archwire, <i>Pro Form</i> Arch Form	100-872DM	100-873DM	—
.014 x .025 <i>Bio-Kinetix Plus</i> Thermally Activated <i>Nitanium</i> Archwire, <i>D-LX</i> Arch Form	—	—	103-104
.016 x .025 Dimpled <i>Bio-Kinetix</i> Thermally Activated <i>Nitanium</i> Archwire, <i>Pro Form</i> Arch Form	100-874DM	100-875DM	—
.016 x .025 <i>Bio-Kinetix Plus</i> Thermally Activated <i>Nitanium</i> Archwire, <i>D-LX</i> Arch Form	—	—	103-105
FINISHING	5/PK		10/PK
.016 x .022 <i>CNA</i> ® Beta III Archwire, <i>Pro Form</i> Arch Form	100-944	100-954	—
.016 X .025 <i>CNA</i> Beta III Archwire, <i>D-LX</i> Arch Form	—	—	103-118
.017 x .025 <i>CNA</i> Beta III Archwire, <i>Pro Form</i> Arch Form	100-945	100-955	—
.017 x .025 <i>CNA</i> Beta III Archwire, <i>D-LX</i> Arch Form	—	—	103-119

**Ortho Organizers*' prescription does not imply endorsement by the doctor(s).

***D-LX* arch is offered exclusively in single packs. For additional information on our archwire selections and recommendations, please see our additional product brochure that can be downloaded at OrthoOrganizers.com or CarriereSystem.com, or contact your customer representative at 800.661.9567.

CARRIERE SELF-LIGATING BRACKET SYSTEM RECOMMENDED ARCHWIRE SEQUENCES (CONTINUED)

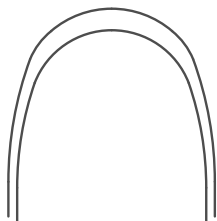


Fig 01
Pro Form Arch Form

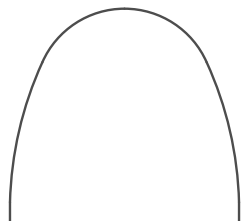



Fig 02
D-LX Arch Form

.022	PRO FORM ARCH FORM		D-LX FORM
	UPPER	LOWER	UNIVERSAL*
INITIAL	10/PK		10/PK
.014 Dimpled <i>Bio-Kinetix</i> Thermally Activated Nitanium Archwire, <i>Pro Form</i> Arch Form	100-852DM	100-853DM	—
.014 <i>Bio-Kinetix Plus</i> Thermally Activated Nitanium Archwire, <i>D-LX</i> Arch Form	—	—	103-101
.016 Dimpled <i>Bio-Kinetix</i> Thermally Activated Nitanium Archwire, <i>Pro Form</i> Arch Form	100-854DM	100-855DM	—
.016 <i>Bio-Kinetix Plus</i> Thermally Activated Nitanium Archwire, <i>D-LX</i> Arch Form	—	—	103-102
OR			
.012 Dimpled Super Elastic Nitanium Black-Ti® Archwire, <i>Pro Form</i> Arch Form	101-901	101-902	—
.014 Dimpled Super Elastic Nitanium Black-Ti Archwire, <i>Pro Form</i> Arch Form	101-903	101-904	—
INTERMEDIATE	10/PK		10/PK
.014 x .025 Dimpled <i>Bio-Kinetix</i> Thermally Activated Nitanium Archwire, <i>Pro Form</i> Arch Form	100-872DM	100-873DM	—
.014 x .025 <i>Bio-Kinetix Plus</i> Thermally Activated Nitanium Archwire, <i>D-LX</i> Arch Form	—	—	103-104
.016 x .025 Dimpled <i>Bio-Kinetix</i> Thermally Activated Nitanium Archwire, <i>Pro Form</i> Arch Form	100-874DM	100-875DM	—
.016 x .025 <i>Bio-Kinetix Plus</i> Thermally Activated Nitanium Archwire, <i>D-LX</i> Arch Form	—	—	103-105
.018 x .025 Dimpled <i>Bio-Kinetix</i> Thermally Activated Nitanium Archwire, <i>Pro Form</i> Arch Form	100-866DM	100-867DM	—
.018 x .025 <i>Bio-Kinetix Plus</i> Thermally Activated Nitanium Archwire, <i>D-LX</i> Arch Form	—	—	103-106
FINISHING			10/PK
.021 x .027 <i>Bio-Kinetix</i> Thermally Activated Nitanium Archwire, <i>Pro Form</i> and <i>D-LX</i> Arch Forms (10/pk)	100-876	100-877	103-123
.017 x .025 <i>CNA</i> Beta III Archwire, <i>Pro Form</i> Arch Form (5/pk)	100-945	100-955	—
.017 x .025 <i>CNA</i> Beta III Archwire, <i>D-LX</i> Arch Form (10/pk)	—	—	103-119
.019 x .025 <i>CNA</i> Beta III Archwire, <i>Pro Form</i> Arch Form (5/pk)	100-948	100-958	—
.019 x .025 <i>CNA</i> Beta III Archwire, <i>D-LX</i> Arch Form (10/pk)	—	—	103-120

*D-LX arch is offered exclusively in single packs. For additional information on our archwire selections and recommendations, please see our additional product brochure that can be downloaded at OrthoOrganizers.com or CarriereSystem.com, or contact your customer representative at 800.661.9567. U.S. Patent No. 7,621,743 and foreign patents

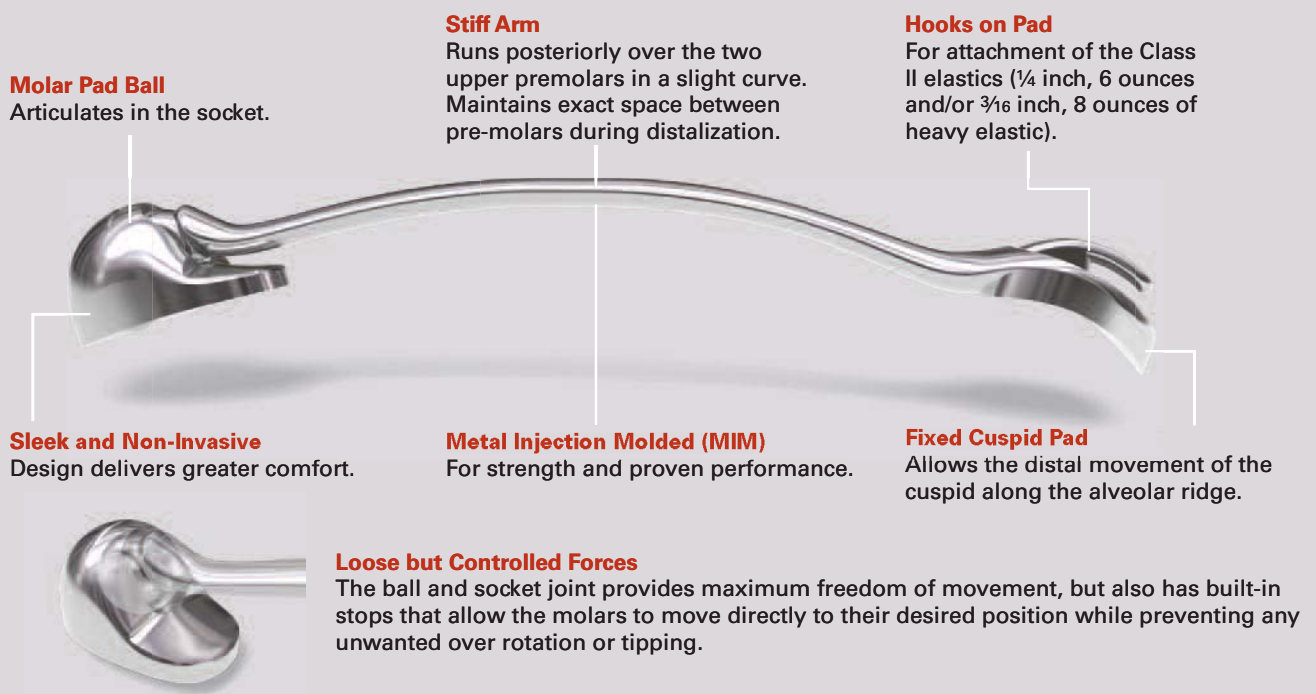


THE CARRIERE DISTALIZER

Class II Correction Appliance shifting the way you think about orthodontics

A huge move in the right direction for orthodontics.

To limit extractions and to turn difficult Class II cases into simpler Class I cases is a dream come true for you and your patients. With its sleek, aesthetic and non-invasive design, the *Carriere Distalizer* Class II Correction Appliance provides greater comfort and shortens treatment time by up to four months. Delivering a natural, gentle and uniform force for distal molar movement with controlled rotation and tipping correction before brackets or other appliances are placed, the *Carriere Distalizer* Appliance solves complex problems almost effortlessly.



The Carriere Distalizer Philosophy

Fast.

Shortens overall treatment time by up to four months as it treats Class II correction at the beginning of the orthodontic treatment, when there are no competing forces in the mouth caused by brackets or other appliances. A Class II correction can usually be completed in an average of 3-4 months.

Natural.

Mimicking a human hip ball-socket joint, the *Carriere Distalizer* Appliance allows the first molar to rotate and upright in its natural and correct finishing position, producing a continuous, natural and uniform force for distal molar movement with controlled rotation and tipping correction. Built-in stops engineered in the appliance prevent the molars from over-rotating and the crowns from distal tipping. The *Carriere Distalizer* Appliance's low forces are biologically compatible during the Class II treatment.

Gentle.

The low force of the *Carriere Distalizer* Appliance is gentle on your patients, and its low profile design is very comfortable to wear. By treating the Class II platform first, it simplifies the entire treatment for you, and provides greater comfort for your patients.

GOING FROM CLASS II TO CLASS I HAS NEVER BEEN EASIER.

The *Carriere Distalizer* is a direct bond appliance that attaches to the maxillary canine and first permanent molar, providing a simple procedure for turning complex Class II cases into a Class I platform. Once a Class I condition is achieved, malocclusions become easier to treat and can be finished with your preferred orthodontic technique. Since there are no competing forces in the mouth when using this appliance, average Class II correction can usually be achieved in just three to four months.

- Eliminates wire changes and the distorting collateral forces that appear with every wire activation used in traditional methods.
- Minimizes root resorption.
- Patients are treated faster with less discomfort.
- High level of patient compliance as the appliance is aesthetically pleasing, and used during the initial phase of treatment when patient's motivation is still high.



Fig A
Carriere Distalizer with Class II elastic attached to hook on the cuspid pad. Class I Platform is present when a cuspid occlusion, in which centric relation coincides with centric occlusion, and the molar occlusal relationships are a perfect Class I.

How it Works.

- Corrects the posterior occlusion to an ideal Class I platform first by rotating and uprighting the maxillary first molars while distalizing the posterior segment, from canine or premolar to molars, into a perfect occlusion.
- Simultaneously produces a light, uniform force for distal molar movement.
- Independently moves each posterior segment, from canine or premolar to molar, as a unit.
- Used at the beginning of treatment when there are no competing forces in the mouth allows the distalization of the molars and premolars from 3 to 6mm range, on average.

Indications.

- Most effective in treating Class II symmetrical and asymmetrical malocclusions without the need for extractions.
- May also be used in many Class I cases with mesially positioned maxillary molars.
- Growing patients are ideal, but adults may be treated as well.
- Mixed dentition Class II cases with fully erupted molars are candidates for Phase 1 treatment to establish a Class I platform.

EASE OF PLACEMENT.

The *Carriere Distalizer* Appliance is placed on the maxillary arch, but requires a solid and consistent source of anchorage in the mandibular arch to avoid protrusion of the lower incisors (a lower Essix Appliance with direct bonded tubes on lower molars, a passive lingual arch, a full mandibular fixed appliance, or mini-screws). Once the appliance is bonded, the Class II elastics are attached from the mandibular molar to the hook of the maxillary cuspid of the *Carriere Distalizer* to activate.

The Movement Created by the Carriere Distalizer.

Bodily distalizes the maxillary posterior segments as a block while correcting upper first molar rotation and uprighting. The posterior portion of the *Carriere Distalizer* Appliance accomplishes three types of molar movement:

1. Uprighting of the crown, if it is mesially inclined (Fig. 01). Once the molar has been uprighted, the articulation of the ball with the socket prevents distal tipping.
2. Distal rotation around the palatal root. When the maxillary first molar is mesially rotated around the palatal root, the molar occlusion may appear to be Class II, while in reality it is Class I

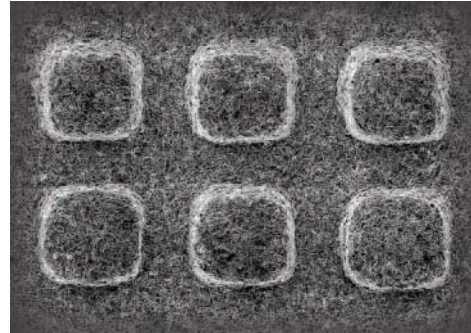


Fig. B – The Carriere with the LX Difference: Micro-etched surface for increased bond strength.

with the canines in a cusp-to-cusp relationship (Fig. 02). When the molar has been de-rotated, the shoulder of the posterior base contacts the mesial arm to prevent over-rotation.

3. Distal displacement without concurrent distal tipping of the crown.



Fig 01 – Provides controlled molar rotation and uprighting.

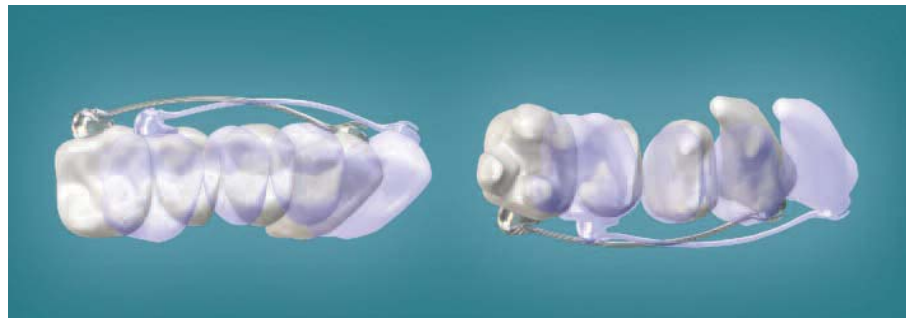


Fig 02 – The maxillary molars are distalized and rotated, providing a platform for maxillary canines to occlude in a Class I relationship.



Fig 03 – With mesially rotated molars, cuspids cannot occlude in Class I relationship.



Fig 04 – Independently moves each posterior segment, from canine or premolar to molar, as a unit.

CLASS II CORRECTION WITH CLEAR ALIGNER SYSTEMS.

The *Carriere Distalizer* Appliance may be used with patients who want to be treated with clear aligners, but display a Class II malocclusion. This allows practitioners to treat more patients requesting clear aligners without limitations. Now complex Class II malocclusion cases can be “jump started” with the *Carriere Distalizer* Appliance and finished with a clear aligner system.



THE CARRIERE DISTALIZER APPLIANCE

DESCRIPTION/SIZE				ITEM NUMBERS LEFT & RIGHT (1 SET)
KITS				
<i>Carriere Distalizer</i> Standard Kit (1 set of each 23, 25, 27mm)				424-900C
<i>Carriere Distalizer</i> Master Kit (1 set of each 16, 18, 20, 23, 25, 27mm)				424-901C
DESCRIPTION/SIZE	COLOUR-CODE	ITEM NUMBERS LEFT	ITEM NUMBERS RIGHT	ITEM NUMBERS LEFT & RIGHT (1 SET)
FIRST BICUSPID TO FIRST MOLAR*				
<i>Carriere Distalizer</i> 12mm	—	424-912L	424-912R	424-912C
<i>Carriere Distalizer</i> 13mm	—	424-913L	424-913R	424-913C
<i>Carriere Distalizer</i> 14mm	—	424-914L	424-914R	424-914C
<i>Carriere Distalizer</i> 15mm	—	424-915L	424-915R	424-915C
<i>Carriere Distalizer</i> 16mm	White	424-916L	424-916R	424-916C
<i>Carriere Distalizer</i> 17mm	—	424-917L	424-917R	424-917C
<i>Carriere Distalizer</i> 18mm	Blue	424-918L	424-918R	424-918C
<i>Carriere Distalizer</i> 19mm	—	424-919L	424-919R	424-919C
<i>Carriere Distalizer</i> 20mm	Pink	424-920L	424-920R	424-920C
<i>Carriere Distalizer</i> 21mm	—	424-921L	424-921R	424-921C

*“First Bicuspid to First Molar” and “Cuspid to First Molar” descriptions are an estimated guide of use. The size distalizer and span of teeth are dependent upon the age and size of each patient. Ask for your free copy of “Class II Correction with Invisalign and Carriere Distalizer” by Dr. Schupp • 999-243

THE CARRIERE DISTALIZER APPLIANCE

DESCRIPTION/SIZE	COLOUR-CODE	ITEM NUMBERS LEFT	ITEM NUMBERS RIGHT	ITEM NUMBERS LEFT & RIGHT (1 SET)
CUSPID TO FIRST MOLAR*				
<i>Carriere Distalizer 22mm</i>	—	424-922L	424-922R	424-922C
<i>Carriere Distalizer 23mm</i>	Yellow	424-923L	424-923R	424-923C
<i>Carriere Distalizer 24mm</i>	—	424-924L	424-924R	424-924C
<i>Carriere Distalizer 25mm</i>	Red	424-925L	424-925R	424-925C
<i>Carriere Distalizer 26mm</i>	—	424-926L	424-926R	424-926C
<i>Carriere Distalizer 27mm</i>	Green	424-927L	424-927R	424-927C
<i>Carriere Distalizer 28mm</i>	—	424-928L	424-928R	424-928C
<i>Carriere Distalizer 29mm</i>	—	424-929L	424-929R	424-929C
<i>Carriere Distalizer 30mm</i>	—	424-930L	424-930R	424-930C
<i>Carriere Distalizer 31mm</i>	—	424-931L	424-931R	424-931C
<i>Carriere Distalizer 32mm</i>	—	424-932L	424-932R	424-932C
<i>Carriere Distalizer 33mm</i>	—	424-933L	424-933R	424-933C
<i>Carriere Distalizer 34mm</i>	—	424-934L	424-934R	424-934C
DESCRIPTION/SIZE	ITEM NUMBERS			
ACCESSORIES				
Typodont-26mm Distalizer with Lingual Arch	631-017D			
<i>Carriere Distalizer</i> Elastics - Force 1 (50 packs of 100 elastics)	424-9F1			
<i>Carriere Distalizer</i> Elastics - Force 2 (50 packs of 100 elastics)	424-9F2			
<i>Carriere Distalizer</i> Storage Tray (1/pk)	CDA-TRAY			
Fixed Lingual Contour Arch Appliance for Lower Anchorage Kit (5 of each size)	032-060			
Fixed Lingual Contour Arch Appliance for Lower Anchorage, Size 1 (5/pk)	032-061			
Fixed Lingual Contour Arch Appliance for Lower Anchorage, Size 2 (5/pk)	032-062			
Fixed Lingual Contour Arch Appliance for Lower Anchorage, Size 3 (5/pk)	032-063			
Fixed Lingual Contour Arch Appliance for Lower Anchorage, Size 4 (5/pk)	032-064			

