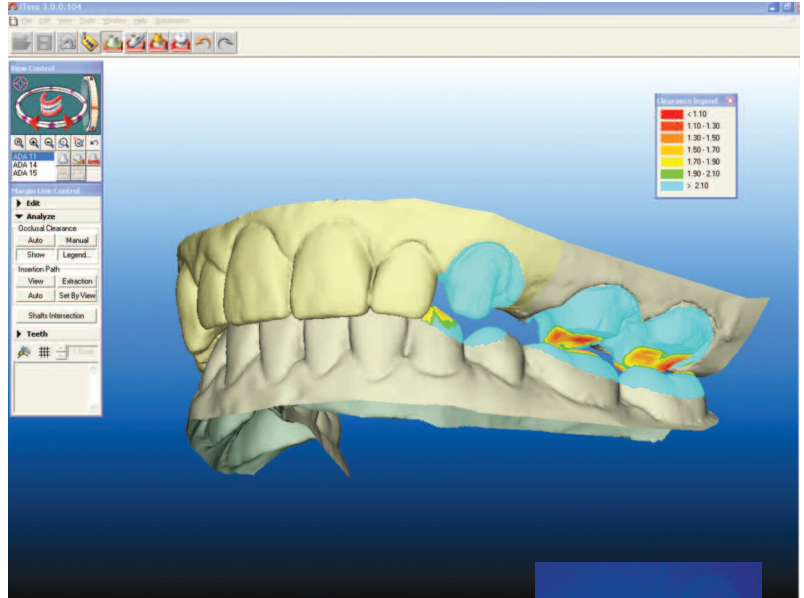


Cadent iTero™ - Changing The Way Impressions Are Taken!

As a laboratory committed to advancing the cause of Digital Dentistry, Aurum Ceramic/Classic supports intraoral scanning systems in general, allowing us to produce a crown with superior fit, contacts and occlusion, and to reduce remakes. Based on our experience, we feel the Cadent iTero Impression System is the current market leader. Here are just a few reasons why:

- Dramatically reduces impression chairtime.
- Virtually eliminates need to re-impress patients.
- While hand piece may appear large and cumbersome, it is actually easy to manoeuvre intraorally with experience and can act as a cheek or tongue retractor at the same time. A bonus with this scanning device: you can touch the teeth for stability.
- Only iTero captures images using the “parallel confocal” technique. What that really means is **NO POWDER needed!**
- On-screen visualization of scans in real time for perfect preparations and occlusal clearance.
- iTero scans in colour, so it is able to capture both supra-gingival and subgingival preparations.
- iTero creates a near exact replica (little to no adjustments to restorations fabricated on an iTero model, and fit is incredibly precise).
- iTero is “two models in one”. Milled from blocks of a proprietary polyurethane material, models do not break or shrink. The die model is also the solid model so you can check fit for margins and check contacts on the same model.
- Can be used for single units, smile designs or full arch models.



Real-time chairside feedback.



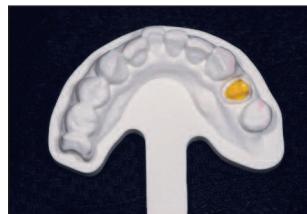
Cadent iTero wand in use intraorally.



Experience the “Precision” of Digital Dentistry

At Aurum Ceramic/Classic, we apply the latest in proven computer-based digital technologies to deliver the ultimate in superior accuracy, communication and beauty. By removing imprecision at each stage in the process, from initial impression and model right through to the final restoration, the entire restorative team (doctor and technician) can cut chairtime, speed up turnaround times and dramatically reduce costly remakes.

In combination with new digital impression systems like Cadent iTero™, we can now deliver predictable, strong, functional and esthetic restorations more quickly and reliably than ever before. For example, you can now upload your impression files directly to Aurum Ceramic/Classic for fast, in-house milling of models and simultaneous milling/fabrication of restoration(s). Superb results you can count on - from advanced smile design and full mouth reconstruction to veneers, crowns, inlays, onlays, bridges or implant-based restorations.



A full arch can be scanned, whether it is a single or multiple units.

Here's one Aurum Ceramic/Classic client's experience with Cadent iTero:

*"I am very impressed with the results. These cases were perfect. The fit was amazing, the contacts perfect, and occlusion was spot on. I did no adjustment at all.
I love this machine. I am just practicing a bit as I have some full arch cases coming in and will be using the iTero. Thanks for giving me the opportunity for this."*

*Dr Paul Holliday,
Forest Lake Queensland, Australia*

Cadent iTero™ is owned by Cadent Inc.