

Bands



Epic™ Contour Molar Bands

- Superior Tooth Design Adapts to Anatomical Contours
- 33 Proportional Graduated Full Sizes in Both Uppers & Lower – Numbered 3-36
- Regular Temper
- Malleability with Excellent Adaptation
- Easy to Recontour
- Accurate Right and Left Occlusal/Gingival Tooth Anatomy
- Available with Micro-Etched Interiors for Maximum Retention



Maxillary Lingual Indent for a More Precise Fit!

Epic 1st Molar	Catalogue Number
Upper Right	851-000
Upper Left	850-000
Lower Right	853-000
Lower Left	852-000

Epic 2nd Molar	Catalogue Number
Upper Right	855-000
Upper Left	854-000
Lower Right	857-000
Lower Left	856-000

Epic™ Contour Band Kits Whole Sizes 3 through 36

All Band Kits can be ordered as Loose Bands or Prewelded Assemblies.

Band Coding: Legibly marked on mesial side: “U” indicates Upper; “L” indicates Lower; “S” indicates 2nd Molar; “R” indicates Right; “L” indicates Left. (for instant identification, an asterisk * is marked after the size of each Epic Band)

Starter Kit

BAND SIZE	3	4	5	6	7	8	9	10	11	12	13	14	15	16	17	18	19	20	21	22	23	24	25	26	27	28	29	30	31	32	33	34	35	36	TOTAL	
Upper or Lower R 1st or 2nd Molar L										1	1	2	2	2	2	2	2	2	2	2	2	2	1	1	1											25
										1	1	2	2	2	2	2	2	2	2	2	2	2	1	1	1											25

Introductory Kit

BAND SIZE	3	4	5	6	7	8	9	10	11	12	13	14	15	16	17	18	19	20	21	22	23	24	25	26	27	28	29	30	31	32	33	34	35	36	TOTAL		
Full Range Upper or Lower R 1st or 2nd Molar L	1	1	1	1	1	1	1	1	1	1	2	2	2	2	2	2	2	2	2	2	2	2	2	2	2	2	1	1	1	1	1	1	1	1	1	1	50
	1	1	1	1	1	1	1	1	1	1	2	2	2	2	2	2	2	2	2	2	2	2	2	2	2	2	1	1	1	1	1	1	1	1	1	1	50
Mid-Range Upper or Lower R 1st or 2nd Molar L											2	3	4	4	4	4	4	4	4	4	4	4	3	2												50	
											2	3	4	4	4	4	4	4	4	4	4	4	3	2													50

Professional Kit

BAND SIZE	3	4	5	6	7	8	9	10	11	12	13	14	15	16	17	18	19	20	21	22	23	24	25	26	27	28	29	30	31	32	33	34	35	36	TOTAL		
Full Range Upper or Lower R 1st or 2nd Molar L	1	1	1	1	1	1	2	2	2	3	3	3	3	3	4	4	4	4	4	4	3	3	3	3	2	2	2	1	1	1	1	1	1	1	1	75	
	1	1	1	1	1	1	2	2	2	3	3	3	3	3	4	4	4	4	4	4	3	3	3	3	2	2	2	1	1	1	1	1	1	1	1	75	
Mid-Range Upper or Lower R 1st or 2nd Molar L										3	4	6	6	6	6	6	6	6	6	6	6	4	4													75	
										3	4	6	6	6	6	6	6	6	6	6	6	4	4														75

Master Kit

BAND SIZE	3	4	5	6	7	8	9	10	11	12	13	14	15	16	17	18	19	20	21	22	23	24	25	26	27	28	29	30	31	32	33	34	35	36	TOTAL		
Full Range Upper or Lower R 1st or 2nd Molar L	2	2	2	2	2	3	3	4	4	4	7	7	7	7	7	7	7	7	7	7	7	7	4	4	4	4	3	3	3	2	2	2	2	2	2	150	
	2	2	2	2	2	3	3	4	4	4	7	7	7	7	7	7	7	7	7	7	7	7	4	4	4	4	3	3	3	2	2	2	2	2	2	150	
Mid-Range Upper or Lower R 1st or 2nd Molar L										10	10	11	11	11	11	11	11	11	11	11	11	11	10	10												150	
										10	10	11	11	11	11	11	11	11	11	11	11	11	10	10													150

Leatherette Band Cases and Trays

Attractive cases for storing and dispensing of bands and band assemblies. Silver with black type. These cases are easy to transport or stack for storage.



BAND CASE - 7" long x 11" wide x 1" tall.

Band Case with Band type on sides

(Epic™/Tempra™) • 482-024

Bicuspid Band Case with Logo Only • 482-026

BAND TRAY WITH COVER

(cover ordered separately)

Epic™ Band Tray • 482-011

Cover • 482-012

Tempra™ Band Tray • 482-018

Cover • 482-017

Tempra™ Molar Bands

- Superior Tooth Morphology
- Full Tempered
- Memory & Elasticity Maintained After Prefit and Removal
- Proportional Graduated Half-Sizing, Numbered 29-1/2 – 44
- Increased Occlusal Edge Strength to Prevent Deformation
- Stiffer Material to Withstand Additional Pressure of Extra and Intraoral Appliances
- Available with Micro-Etched Interiors for Maximum Retention



Tempra™ Band Kits Half sizes 29-1/2 through 44

All Band Kits can be ordered as Loose Bands or Prewelded Assemblies.

Band Coding: Legibly marked on mesial side: "U" indicates Upper; "L" indicates Lower; "S" indicates 2nd Molar; "R" indicates Right; "L" indicates Left.

Tempra 1st Molar	Catalogue Number
Upper Right	841-000
Upper Left	840-000
Lower Right	843-000
Lower Left	842-000

Tempra 2nd Molar	Catalogue Number
Upper Right	845-000
Upper Left	844-000
Lower Right	847-000
Lower Left	846-000

Starter Kit

BAND SIZE	29-1/2	30	30-1/2	31	31-1/2	32	32-1/2	33	33-1/2	34	34-1/2	35	35-1/2	36	36-1/2	37	37-1/2	38	38-1/2	39	39-1/2	40	40-1/2	41	41-1/2	42	42-1/2	43	43-1/2	44	TOTAL
Upper or Lower R							1	1	2	2	2	2	2	2	2	2	2	2	1	1	1										25
1st or 2nd Molar L							1	1	2	2	2	2	2	2	2	2	2	2	1	1	1										25

Introductory Kit

BAND SIZE	29-1/2	30	30-1/2	31	31-1/2	32	32-1/2	33	33-1/2	34	34-1/2	35	35-1/2	36	36-1/2	37	37-1/2	38	38-1/2	39	39-1/2	40	40-1/2	41	41-1/2	42	42-1/2	43	43-1/2	44	TOTAL
Full Range Upper or Lower R	1	1	1	1	1	2	2	2	2	2	2	2	3	3	3	2	2	2	2	2	2	2	2	1	1	1	1	1	1	1	50
1st or 2nd Molar L	1	1	1	1	1	2	2	2	2	2	2	2	3	3	3	2	2	2	2	2	2	2	2	1	1	1	1	1	1	1	50
Mid-Range Upper or Lower R								4	4	4	4	4	5	5	4	4	4	4												50	
1st or 2nd Molar L								4	4	4	4	4	5	5	4	4	4	4												50	

Professional Kit

BAND SIZE	29-1/2	30	30-1/2	31	31-1/2	32	32-1/2	33	33-1/2	34	34-1/2	35	35-1/2	36	36-1/2	37	37-1/2	38	38-1/2	39	39-1/2	40	40-1/2	41	41-1/2	42	42-1/2	43	43-1/2	44	TOTAL
Full Range Upper or Lower R	1	1	1	1	2	2	2	3	4	4	4	4	5	5	5	4	4	4	4	3	2	2	2	1	1	1	1	1	1	1	75
1st or 2nd Molar L	1	1	1	1	2	2	2	3	4	4	4	4	5	5	5	4	4	4	4	3	2	2	2	1	1	1	1	1	1	1	75
Mid-Range Upper or Lower R								6	6	6	6	6	7	7	7	6	6	6	6											75	
1st or 2nd Molar L								6	6	6	6	6	7	7	7	6	6	6	6											75	

Master Kit

BAND SIZE	29-1/2	30	30-1/2	31	31-1/2	32	32-1/2	33	33-1/2	34	34-1/2	35	35-1/2	36	36-1/2	37	37-1/2	38	38-1/2	39	39-1/2	40	40-1/2	41	41-1/2	42	42-1/2	43	43-1/2	44	TOTAL
Full Range Upper or Lower R	2	2	3	3	3	4	4	7	7	9	9	9	9	9	9	9	7	7	7	4	4	3	3	3	2	2	2	2	2	2	150
1st or 2nd Molar L	2	2	3	3	3	4	4	7	7	9	9	9	9	9	9	9	7	7	7	4	4	3	3	3	2	2	2	2	2	2	150
Mid-Range Upper or Lower R								12	12	12	12	12	14	14	14	12	12	12	12												150
1st or 2nd Molar L								12	12	12	12	12	14	14	14	12	12	12	12												150

General Purpose Primary Molar Bands

9 sizes, 25 through 30-1/2. Universal Left or Right. Available in Starter Kits, Prewelded or as Individual Bands. Permanent size marking. May be prewelded with mini second molar tube, cleat, button or seating lug.



Starter Kit

Size	25	26	27	28	28-1/2	29	29-1/2	30	30-1/2	TOTAL
Quantity	4	5	5	5	5	4	4	4	4	40

Primary Molar Band	Order #
Upper	835-000
Lower	836-000

Bicuspid Bands

- Permanent Size Marking
- Anatomically Contoured
- Full Tempered
- Enhanced Retention



To Order Kits:
Specify kit type:
Introductory (100 bands),
Professional (150 bands),
or Master (300 bands)

Specify size range:
Full Range or Mid-range.

All Band Kits can be ordered as Loose Bands or Prewelded Assemblies.

To Order Individual Bands:
Specify tooth type, left or right, size number and quantity.

Bicuspid Description	Catalogue Number
Upper Right	828-000
Upper Left	829-000
Lower Right	830-000
Lower Left	831-000

Maxillary Bicuspid Kits

Extended Size Range: SIZE 1 THROUGH SIZE 24 NON RIGHT/LEFT • MARKED U1 through U24

Full Range Kit

BAND SIZE		1	2	3	4	5	6	7	8	9	10	11	12	13	14	15	16	17	18	19	20	21	22	23	24	TOTAL
Introductory Kit	R	1	1	1	1	1	2	2	2	3	3	4	4	4	4	3	3	2	2	2	1	1	1	1	1	50
	L	1	1	1	1	1	2	2	2	3	3	4	4	4	4	3	3	2	2	2	1	1	1	1	1	50
Professional Kit	R	2	2	2	2	2	3	3	4	4	4	4	5	5	5	4	4	4	3	3	2	2	2	2	2	75
	L	2	2	2	2	2	3	3	4	4	4	4	5	5	5	4	4	4	3	3	2	2	2	2	2	75
Master Kit	R	3	3	3	4	5	6	6	9	9	9	9	9	9	9	9	9	9	6	6	5	4	3	3	3	150
	L	3	3	3	4	5	6	6	9	9	9	9	9	9	9	9	9	9	6	6	5	4	3	3	3	150

Mid-Range Kit

BAND SIZE		1	2	3	4	5	6	7	8	9	10	11	12	13	14	15	16	17	18	19	20	21	22	23	24	TOTAL
Introductory Kit	R							4	4	4	4	4	5	5	4	4	4	4	4							50
	L							4	4	4	4	4	5	5	4	4	4	4	4							50
Professional Kit	R							6	6	6	6	6	7	7	7	6	6	6	6							75
	L							6	6	6	6	6	7	7	7	6	6	6	6							75
Master Kit	R							12	12	12	12	12	14	14	14	12	12	12	12							150
	L							12	12	12	12	12	14	14	14	12	12	12	12							150

Mandibular Bicuspid Kits

Extended Size Range: SIZE 3 THROUGH SIZE 26 NON RIGHT/LEFT • MARKED L3 through L26

Full Range Kit

BAND SIZE		3	4	5	6	7	8	9	10	11	12	13	14	15	16	17	18	19	20	21	22	23	24	25	26	TOTAL
Introductory Kit	R	1	1	1	1	1	2	2	2	3	3	4	4	4	4	3	3	2	2	2	1	1	1	1	1	50
	L	1	1	1	1	1	2	2	2	3	3	4	4	4	4	3	3	2	2	2	1	1	1	1	1	50
Professional Kit	R	2	2	2	2	2	3	3	3	3	5	5	5	5	5	4	4	4	3	3	2	2	2	2	2	75
	L	2	2	2	2	2	3	3	3	3	5	5	5	5	5	4	4	4	3	3	2	2	2	2	2	75
Master Kit	R	3	3	3	4	5	6	6	9	9	9	9	9	9	9	9	9	9	6	6	5	4	3	3	3	150
	L	3	3	3	4	5	6	6	9	9	9	9	9	9	9	9	9	9	6	6	5	4	3	3	3	150

Mid-Range Kit

BAND SIZE		3	4	5	6	7	8	9	10	11	12	13	14	15	16	17	18	19	20	21	22	23	24	25	26	TOTAL
Introductory Kit	R							4	4	4	4	4	5	5	4	4	4	4	4							50
	L							4	4	4	4	4	5	5	4	4	4	4	4							50
Professional Kit	R							6	6	6	6	6	7	7	7	6	6	6	6							75
	L							6	6	6	6	6	7	7	7	6	6	6	6							75
Master Kit	R							12	12	12	12	12	14	14	14	12	12	12	12							150
	L							12	12	12	12	12	14	14	14	12	12	12	12							150

Band and Bracket Auxiliaries

Weldable Lingual Attachments for Band Assemblies

These lingual attachments can be welded to create band assemblies.



Lingual Button (flat)
(30 per pack) • 971-020



Lingual Button (curved)
(30 per pack) • 971-021



Cuspid/Bicuspid Lingual Cleat
(100 per pack) • 971-024



Seating Lugs
(100 per pack)

Bicuspids • 971-027
Molars • 971-028

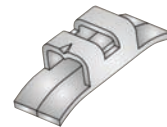


Molar Lingual Cleat
(100 per pack) • 971-025

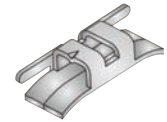
• 972-XXX Denotes attachment to be welded to band.

• 971-XXX Denotes attachment to be sold loose in bag.

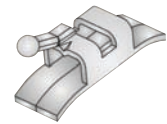
Lingual Sheaths



.036 slotted, horizontal, latching indent. Fits left or right.
(10 per pack)
• 971-032



.036 slotted, horizontal, latching indent hook.
(10 per pack)
UR/LL • 971-034
UL/LR • 971-035



.036 horizontal hook, slotted, latching indent.
(10 per pack)
UR/LL • 971-036
UL/LR • 971-037



With vertical hooks.
(10 per pack)
UR/LL • 971-038
UL/LR • 971-039

Storage & Dispensers

Pre-Packaged Chairside Dispensers



Sliding Bracket Trays & Rack

Call for Pre-loaded Tray Pricing.
Individual Sliding Bracket Trays.
5/16" tall x 5" wide 2-5/8" deep.
(10 per pack).

Empty • 482-006
Sliding Bracket Tray Rack • 482-006R



Chairside Bracket Dispenser

Perfect for dispensing individual patient set-ups. Stores up to 10 cases of brackets. Limits handling and contamination.

4-1/6" x 6-1/6" x 5/6" (brackets not included)
(10 per pack) • 482-001



Safe-T-Bracket Tray™

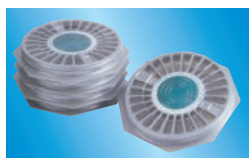
For single patient use. Excellent for transporting brackets to chairside. Adhesive circles hold one complete set-up of brackets and buccal tubes. 7-1/2" x 2-1/2" (brackets not included)
(25 per pack) • 482-002



Band Storage Cabinet

Holds band tray inserts, which can be easily removed for chairside use. Note: Molar trays not included. Trays can be purchased separately. (see below). 11-1/2" x 7-1/4" x 7-1/2"

Cabinet (trays not included) • 482-016
Bracket Tray (Cover • 482-014) • 482-013
Epic™ Band Tray (Cover • 482-012) • 482-011
Tempra™ Band Tray (Cover • 482-017) • 482-018
Primary Molar Tray (Cover • 482-021) • 482-020



Silver Carousel Bracket Trays

Silver with clear cover. Holds either 10 or 50 cases. Twist dial design reduces handling and contamination of brackets, which remain secure and easy to identify and access.

Holds 10 cases (7" x 3/8") • 580-000
Holds 50 cases (6.25" x 5/8") • 482-005



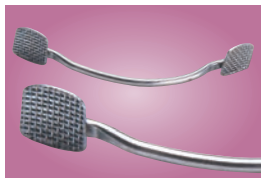
Band or Bracket Leatherette Cases

Attractive cases for storage and dispensing of bands, band assemblies and brackets. Cases are silver.

7" long x 11" wide x 1" tall.

Logo with Band Type on sides (Epic™/Tempra™) • 482-024
Logo - Bracket • 482-025
Logo - Bicuspid Bands • 482-026

Direct Bond Lingual Attachments



Bondable Retainers Lower Cuspid-to-Cuspid (3x3)

Made from heat treatable .032 wire and 80-gauge foil mesh pads for superior bond strength. May be fitted to study model or in some cases directly to patient.



Individual components (5 per pack):

22 mm • 433-022	28 mm • 433-028
24 mm • 433-024	30 mm • 433-030
26 mm • 433-026	

Kit • 433-000 (4 each of size in a convenient dispenser case: 20 total)



Opti-MIM® Direct Bond Button

Nickel-Lite®. Single unit Metal Injection Molded and tailored to conform to tooth surface. Features Grip-LOK® base.

(20 per pack) • 430-002



Opti-MIM® Micro Direct Bond Lingual Button

Nickel-Lite®. Small size allows bonding in hard to access areas. Small radiused head ensures patient comfort and provides room to tie elastics or wires. Features Grip-LOK® base for greater bond strength.

(10 per pack) • 430-001



Opti-MIM® Direct Bond Eyelet

This Nickel-Lite® eyelet can be easily bonded to any tooth. It offers better bond strength and a Grip-LOK® base.

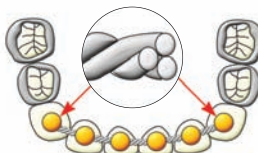
(10 per pack) • 430-005



Opti-MIM® Direct Bond Eyelet with Chain

A great addition to a popular favorite, our eyelet is now available with a 1" length sterling silver chain that can be used full length or trimmed as needed. Strong and completely biocompatible, the chain links are big enough to thread power elastics through to provide traction in the desired direction to expose impacted teeth.

(1 per pack) • 430-005C



Bondable Lingual Retainer Wire

Made of .032" stainless steel in tight twist which will not unravel when cut and facilitates bonding without end loops or bonding pads. Allows for long term stability with physiologic teeth movement. Bond any or all teeth in segment.

7" straight lengths.

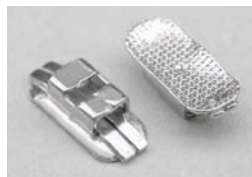
(20 per pack) • 433-040



Direct Bond Lingual Cleat

Low-profile design with smooth ball hooks easily adjusted for elastic placement or other treatment purposes.

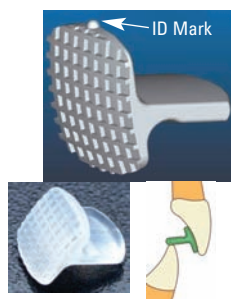
(20 per pack) • 430-004



Direct Bond Lingual Sheath

Foil mesh pad, bonds directly to molars. .036 slotted, horizontal, latching indent. Fits left or right.

(10 per pack) • 971-032DB



Opti-MIM® Bite Guide™

One-piece unit which bonds directly to lingual side of the upper centrals to efficiently open a deep bite and/or advance the mandible. Simply reverse unit with respect to the ID mark for appropriate use. (10 per pack)

Stainless Steel • 430-006

Composite • 430-007



Composite Direct Bond Button

Esthetically pleasing button is smooth and radiused for enhanced patient comfort. Durable and stain resistant, the base is curved for an anatomical fit with dovetailed grooves on base for secure mechanical bond. Bond with any bonding adhesive with no extra primer necessary.

(10 per pack) • 430-000

