

veneERS

IPS EMPRESS® ESTHETIC

4

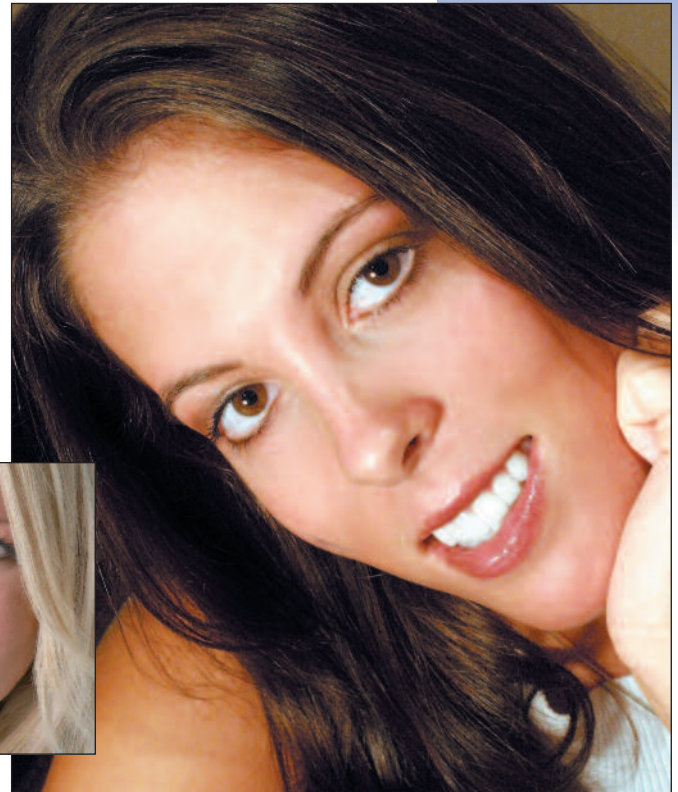
Raising the Bar in Pressable Ceramics!

Today's patient demands more from a dental restoration: life-like esthetics, strength and longevity. Building on IPS Empress' more than 15 years of clinical success, new IPS Empress Esthetic delivers dramatic veneer esthetics with the characterization and translucency you and your patients expect. The materials' enhanced leucite crystal distribution provides enhanced optical properties and beautiful incisal translucency. And, it is now available in a broader shade range, including new bleached shades.

Optimizing new fabrication methods, IPS Empress Esthetic (featuring the new IPS Empress Esthetic Veneer Material) delivers the fit of a pressed restoration with the esthetics of a layered veneer, truly mimicking the beauty of natural teeth while conserving valuable tooth structure. The laboratory can now take the neutral translucent ingots and layer opalescent IPS Empress Esthetic Veneer materials on top of them to create a three-dimensional effect, a technique proven over more than 10 years of clinical use by leading clinicians. These true-to-nature esthetics are not limited to veneers, IPS Empress Esthetic can also be prescribed for crowns, inlays and onlays. All with improved clinical properties – such as a 16% increase in flexural strength.



Dentistry courtesy of Dr. D'Aoust and Dr. Gallagher.



Dentistry courtesy of Dr. Tara Hardin.

Dentistry courtesy of Dr. Randy Bryson.



Esthetic Ingots Provide Chameleon Effect

Available in eleven shades (including two new bleached shades), the natural light scattering of the Ingot material provides a balanced chameleon effect and veneers that blend naturally into the oral environment. The bleached shades can be used in situations where a brighter effect is desired – for particularly light shades and after bleaching. A new IPS Empress Esthetic Ingot Shade Guide assists in determining the appropriate shade of ingot.

Dentistry courtesy of Dr. Jack Schmid.



New technique for enhanced design possibilities

Aurum Ceramic's LVI-trained AE (Advanced Esthetic) Team™'s unique experience makes your restorations come alive! By applying the "cut-back" technique, the fully anatomic pressed IPS Empress Esthetic Ingots are reduced to a dentin-mamelon structure in the incisal third. The ingots can then be internally characterized (e.g., mamelons can be recreated). The incisal third is then built up with 14 layering shades of opalescent IPS Empress Esthetic Veneer layering materials.

Features and Benefits

- Greatest translucency possible for natural esthetics.
- Homogeneous leucite crystal distribution for higher flexural strength and improved optical properties.
- Optimized color and clarity.
- Eleven Ingot shades (including extended shades in the bleach range) and 14 Layering shades.
- Gentle on opposing dentition.
- Excellent marginal adaptation.
- Part of the original IPS Empress system.
- Technique proven over ten years of clinical success.

Indications:

- Esthetic contouring and improvement.
- Correct malpositions of individual teeth.
- Fractured or chipped teeth.
- Mask discoloration.
- Modifying or maintaining anterior guide planes (lingual anterior applications).
- Canine rise restorations.

Contraindications:

- Severely reduced residual dentition.
- Bruxism.
- Teeth actively erupting or exhibiting severe crowding.

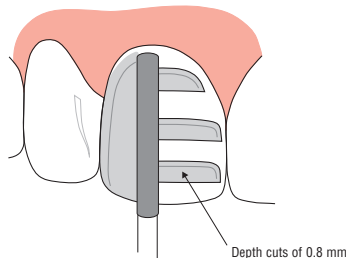
Laboratory Requirements:

1. Thoroughly detailed prescription denoting which teeth are to be veneered as well as selected shade.
2. Clear and accurate upper and lower full arch impressions or study models.
3. Bite registration.

Shade Selection

- Recommended Shade Guides: Ivoclar Chromascop®, Vita Lumin or Vita 3D-Master Shade Guides.

Preparation



Use medium grit, round-ended diamond bur to remove uniform thickness of facial enamel by joining the depth-cut grooves.

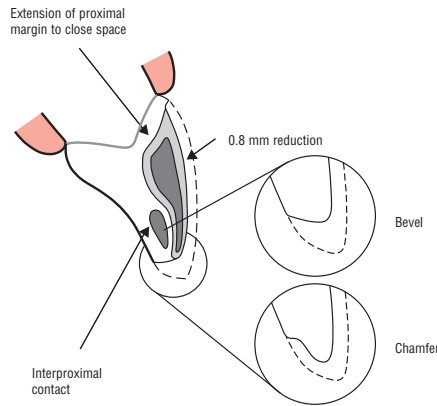
Incisal Preparation:

- Overlap of incisal edge is recommended.
- Long bevel lingual preparation.
- Lingual butt margin provides greatest strength as butt shoulder.
- 0.5 mm labial gingival finishing line.
- All line angles rounded, preparation smooth.

Interproximal Extension:

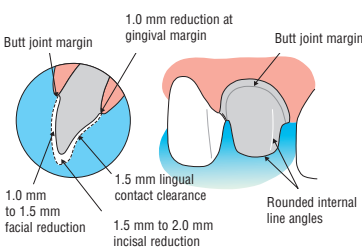
- Using round-ended diamond bur, extend the interproximal preparation from the gingival chamfer into the interproximal space. NOTE: Eliminate all discolored enamel into the interproximal (i.e., elbow prep).

Lingual Reduction to Increase Length:

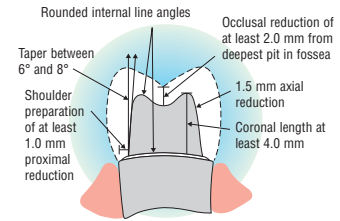


- Reduce tooth in stress bearing areas to provide bulk of porcelain for function.
- Angle diamond bur to eliminate undercuts and establish deep chamfer on lingual aspect of preparation.
- Allow for minimum of 1 mm of porcelain.
- Allow for veneer thickness of 0.8 mm labially (with incisal covering).
- Proximal margins completed labial to contact point. Preserve contacts wherever possible. May be necessary to prepare through proximal contact point when clinical conditions dictate (such as slice prep), interproximally to obtain proper emergence profile.
- Provide definite finish line for technician with chamfer lingual preparation and 0.5 mm labial gingival finishing line.

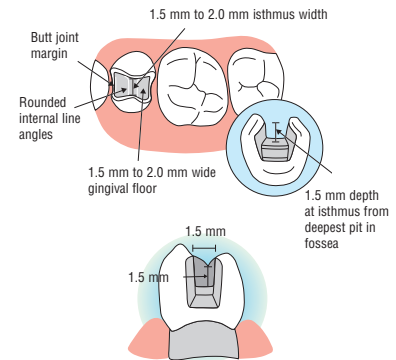
ANTERIOR ALL-CERAMIC CROWNS



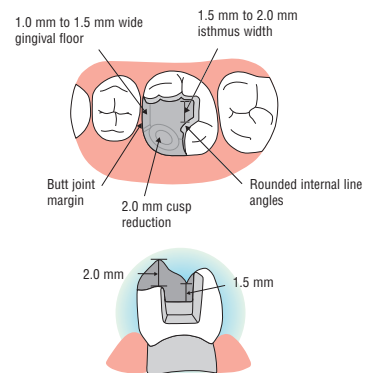
POSTERIOR ALL-CERAMIC CROWNS



INLAYS



ONLAYS



BONDING INSTRUCTIONS

As traditional luting agents have little or no chemical bond to porcelain or dentin structure, bonding is preferred to cementation. Composite resin cement achieves both a chemical and a micromechanical lock, enabling it to achieve superior retention.

NOTE: Must be bonded using dual cured resin cement with companion enamel/dentin bonding agent. Light cure only resin cement can be used for veneers.

© Aurum Ceramic Dental Laboratories LLP. (2009). Reproduction of this work in whole or in part, by any means whatsoever, is strictly prohibited without the express written consent of Aurum Ceramic Dental Laboratories LLP.