

# DENTURES

## ECLIPSE™

# 5

### Taking a processed baseplate and building on it!

Monomer-free<sup>1</sup>, Eclipse is a revolutionary light-cured material that utilizes a proven indirect technique to produce highly aesthetic, well-fitting dentures with excellent color stability. Each Eclipse denture takes into account the subtle variations of natural dentition and contours of natural tissue that make each patient unique. They accurately capture the patient's "personality" (age, sex, skin tone, facial features), smile lines, buccal corridors and embrasures. Characterization is easy. Different shades of Eclipse's Contour Resin can be mixed to achieve desired aesthetics (lighter or darker shading) in the finished denture. As Eclipse resins are easy to handle, various colors can be applied exactly where doctor desires.

Clinically proven through a multi-site clinical study conducted with over 100 patients and up to two years data, Eclipse offers excellent mechanical properties, high strength and superior fit and comfort. Dentures can be crafted with the Accu-Liner (if desired). This results in absolutely correct occlusal plane and incisal length. Bite rims are much easier as only a simple bite is required. Eclipse can be used with either acrylic or porcelain teeth.



<sup>1</sup> Does not contain methyl, ethyl, propyl or butyl methacrylate monomers.

#### The Materials

The Eclipse system utilizes three light-cured resins (i.e., Baseplate, Set-up and Contour Resins) layered together to fabricate a denture. Composed of urethane oligomers, they surpass the physical and mechanical properties of earlier urethane materials. These resins have been developed to handle like wax, yet be cured into a denture base material. Baseplate, Set-Up and Contour Resins all bond well together with micro-mechanical retention. When the Contour and Set-Up dentures are cured, the resin is locked in place (bond is the same as for bonding of plastic teeth to acrylic denture resin). Repairable like conventional denture base materials.



Technician forms final baseplate directly on Master Model.

#### The Technique

A completely new concept in denture fabrication, the Eclipse indirect technique eliminates flasking and investing (no processing errors and changes in vertical dimension). Fit at Try-in equals fit at delivery. The technician forms the final baseplate directly on the Master Model, which becomes part of the final denture. Dental professionals and patients can evaluate fit and aesthetics at the occlusal and try-in appointments. After your occlusal appointment, the teeth are directly set on the baseplate. Wax-like Eclipse material can be adjusted at try-in. Then the technician processes the denture using a high-energy light-curing system.



Denture base and teeth easily adjusted chairside at Try-in appointment.

#### Features and Benefits

- Monomer-free!
- Clinically proven. Multi-site clinical study conducted with over 100 patients and up to two years data.
- Fit at try-in equals fit at delivery. Light-cure eliminates changes in vertical dimension.
- Final baseplate formed directly on Master Model. Becomes part of final denture.
- Wax-like Eclipse material can be adjusted at try-in.
- Dentist and patient can evaluate fit, function and aesthetics at each appointment.
- Customized aesthetics and easy characterization.
- Fully repairable and relinable.
- Guaranteed\*. Every new full or partial denture Aurum Ceramic produces carries a TWO (2) YEAR guarantee against defects in material and craftsmanship. Dentist can extend protection for an additional three years for a small extra fee.

\* Certain terms and conditions apply. Warranties and guarantees do not apply to denture repairs or relines.

## Indications:

- Full Upper and Lower Dentures
- Partial Dentures

## Indirect Build-up Technique: Overview

- No displacement of teeth at try-ins. Eclipse more stable than wax. Teeth will not move unless dentist warms material in a warm water bath to adjust them, or patient uses excessive biting force.
- Never combine wax with uncured Eclipse resins. Eclipse resins must be kept free of dirt and debris, as foreign inclusions become part of finished denture.

## Initial Appointment

1. Review medical history with patient.
2. With patient's approval, make indelible ink lines on nose and chin to measure vertical dimension at rest and vertical dimension of occlusion.
3. Take detailed final impression. Critical since processed baseplate incorporated into final completed denture. (Fig. 1)
4. If you pour your own models, make sure that land areas are no greater than 1 mm above depth of sulcus. Carve the post-dam in master model if not included in impression. (Fig. 2)
5. Use Eclipse or Lucitone Color Guide to select desired baseplate shade. Indicate shade (original, light pink, light reddish pink, dark pink or clear) on prescription and specify Eclipse. (Fig. 3)

## Occlusal Appointment

1. Aurum Ceramic will form final denture baseplate directly on master model.
2. Evaluate baseplate for undercuts, border extensions and tissue adaptation. (Fig. 4) Use pressure indicating paste if necessary.
3. Obtain the occlusal records by adjusting the wax rim (Fig. 5) to indicate:
  - Interocclusal distance between upper and lower arch.
  - Midline, width of the anterior six, canine marks and smile line.

## Try-in Appointment

1. Try-in returned to dental office in light-safe bag supplied by Aurum Ceramic. (Fig. 6) While material has degree of light sensitivity, appliance can be in ambient light while working with patient. At all other times, keep appliance in light-safe bag.
2. At try-in, uncured denture (left) has distinctly different color than final cured denture (right). (Fig. 7)
3. Try-in for patient to review look and feel and ask for chairside adjustments.
4. For changes at chairside, use heated water bath (110° F/40° C). (Fig. 8) DO NOT use Bunsen Burner. Move resin near base of tooth to move it into position. DO NOT push directly on tooth as gap or void may be created that can impact tooth retention.
5. If occlusion not acceptable, remove posterior teeth for new bite registration. Use silicone putty. DO NOT use wax.
6. For significant adjustment of occlusal plane, vertical dimension or anterior tooth position (i.e., more than 1 mm), send case

back to Aurum Ceramic (with instructions) for a reset.

7. Return try-in in light-safe bag for adjustments or processing.

## Delivery Appointment

- After try-in, Aurum Ceramic processes denture with state-of-the-art, high-energy light curing system. (Fig. 9)
- If necessary at delivery, adjust the denture base using normal procedures.

### TIPS:

- To plump gingival areas, use silicone putty to add volume. DO NOT use wax (will leave residue and may leave marks on final denture).
- To reduce gingival areas, just carve material away (or instruct technician).
- If wash impression required, take at Occlusal Appointment (NOT at Try-in). Any changes should be made as early in process as possible.



Figure 1 Taking final impression.



Figure 2 Model.



Figure 3 Eclipse shade guide.

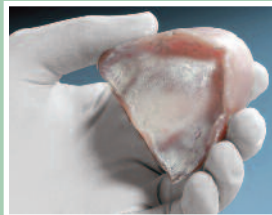


Figure 4 Baseplate.



Figure 5 Wax rims.

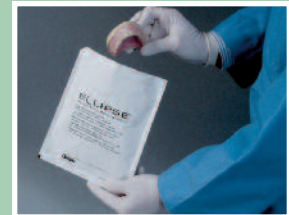


Figure 6 Keep appliance in light-safe bag.



Figure 7 Uncured denture (left) / Cured (right).



Figure 8 Placing try-in into hot water bath.



Figure 9 Eclipse Light-cure unit.

© Aurum Ceramic Dental Laboratories LLP. (2009). Reproduction of this work in whole or in part, by any means whatsoever, is strictly prohibited without the express written consent of Aurum Ceramic Dental Laboratories LLP.