

# Saddle-Lock<sup>®</sup>

## “Hidden Clasp”

### Vitallium<sup>®</sup> 2000 Cast Partials



#### Preserve Natural Dentition

- Eliminate visible metal clasp display without the aid of cast crowns or expensive precision attachments.
- Flexible design can be used with completely tooth-borne removable partial dentures and with both unilateral and bilateral distal extension appliances.
- Accurate measurement and paralleling of planes using “Retentoscope” ensures each abutment tooth has comfortable, yet positive load.

#### Proven Retention

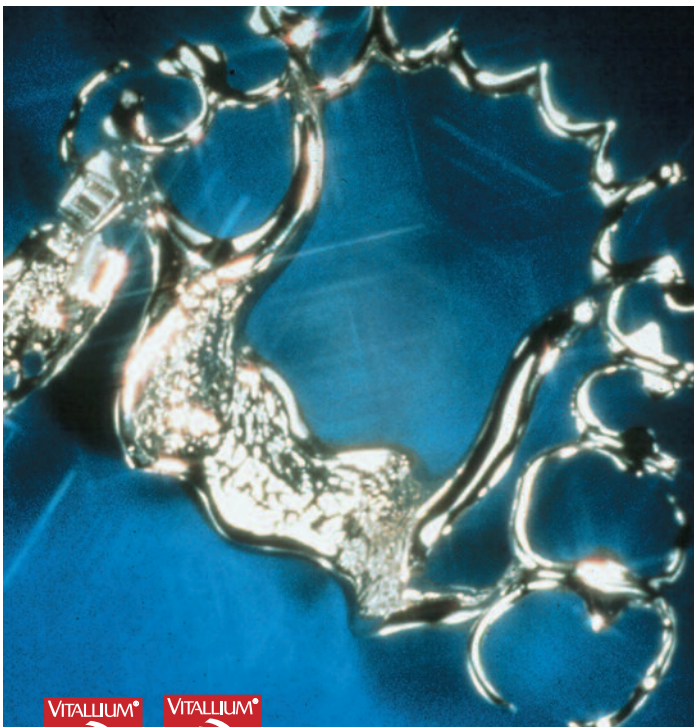
- Utilizes natural mesial and distal undercut planes of abutment teeth adjacent to denture saddle.
- Clasp emergence back at the casting finishing line providing proper resiliency.
- Clasp terminals positioned at each end of denture saddle, effectively locking segment to ridge.



*Unightly old conventional clasp upper partial denture.*



*Completely tooth-borne partial upper denture.*



#### Natural Management of Oral Stresses

- Stress shared by adjoining teeth as forces are distributed in anterior-posterior direction.
- Handles inadequate retention and instability in free-end saddle cases (retentive clasp force located in distal undercuts transmits its stabilizing effect into the loose end segment of denture, resisting dislodging forces during mastication).

#### Crafted with Vitallium<sup>®</sup> 2000

- Allows smaller, lighter partials.
- Extraordinary tensile strength over 855 MPa's
- Elongation of 9% (partials adjust like gold)

#### Expertise You Can Rely On

Aurum Ceramic has the knowledge, proven technical abilities and creativity to deliver unsurpassed Saddle-Lock results on every case – every time. Call TOLL FREE.

