

Glass Ionomer Orthodontic Bonding

GC Fuji ORTHO™ LC

Light-Cured Orthodontic Bonding Adhesive

GC Fuji ORTHO LC is a light-cured resin modified glass ionomer that bonds brackets, attachments and appliances to enamel and to porcelain and metal restorations. GC Fuji ORTHO LC features low sensitivity to moisture. Available in both powder-liquid and capsules.



Features & Benefits:

- Clinically proven:
 - Fuji ORTHO LC and Fuji ORTHO offer significant advantages over composite bonding systems and reduce chair time.
- Simplified wet field bonding
 - Simplified technique
 - Saves time
- No Enamel Etching required
 - GC ORTHO Conditioner improves adhesion without demineralizing enamel
- Significant Fluoride Release and Recharge
 - Reduces decalcification
 - Promotes remineralization
- Greater Efficiency
 - Users experience 15-30 min. time savings per case start
 - Save 10-15 min. clean-up time
- Starter Packages
 - Include technique card
 - GC ORTHO Conditioner

GC Fuji ORTHO LC	Order #
GC Fuji ORTHO LC Introductory Package Contains: One 15g power 6.8ml liquid, scoop, and mixing pad	480.101
GC Fuji ORTHO LC Standard Package Contains: One 40g powder, two 6.8ml bottles of liquid, scoop and mixing pad	480.102
GC Fuji ORTHO LC Liquid Contains: 6.8ml	480.107
GC Fuji ORTHO LC Powder Only Contains: 40g	480.106
GC Fuji ORTHO LC Capsule Starter Package Contains: 50 capsules, applicator and ORTHO Conditioner	480.130
GC Fuji ORTHO LC Refill Package Contains: 50 Capsules	480.131
GC Capsule Applicator III	480.132
GC ORTHO Conditioner Contains 25g	480.108

How to Use Capsules:

Healthy Enamel Before Etching	Treated with GC ORTHO Conditioner	Demineralized with Ortho-Phosphoric Acid	Zone of Inhibition Fluoride Release

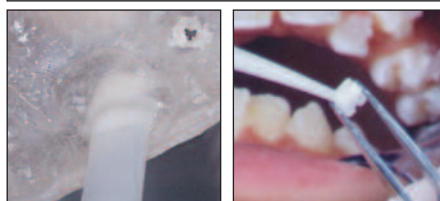
GC Fuji ORTHO™ SC

Self-Cured Orthodontic Bonding Adhesive

Excellent for bonding brackets and acrylic appliances, GC Fuji ORTHO is the self-curing formula of our Better Orthodontic Bonding System. Just like GC Fuji ORTHO LC, you'll experience excellent bonding success and minimize the chance of enamel damage and decalcification at debonding.



GC ORTHO CONDITIONER



GC Fuji ORTHO SC	Order #
GC Fuji ORTHO Standard Package Contains: One 40g powder, two 6.7ml bottles of liquid, scoop, and mixing pad	480.121
GC Fuji ORTHO Liquid Only, 6.7ml	480.127
GC Fuji ORTHO Powder Only, 40g	480.126
GC Fuji ORTHO Conditioner, 25g	480.108

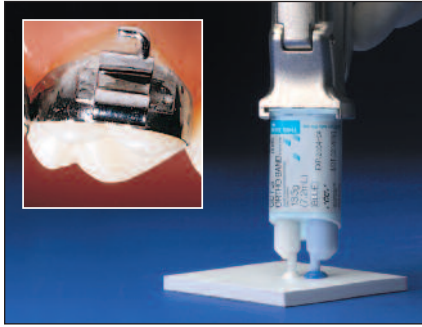
Features & Benefits:

- Same as above, only self-cured.

Glass Ionomer Orthodontic Bonding (Continued)

GC Fuji ORTHO™ BAND Paste Pak

Glass Ionomer Orthodontic Band Cement



Features & Benefits:

- **Paste-Paste Formulation**
 - No time spent measuring, mixing powders, or liquid drop sizes.
 - Mixes to a perfect consistency in 10-15 seconds. Easy to recognize homogenous mix.
 - Excellent handling characteristics. Stays where you place it – will not run.
- **Paste Pak Dispenser**
 - Produces ideal consistency every time.
 - Dispenses the exact mixing ratio regardless of amount dispensed.
 - Metering slide enables volume control of material dispensed to reduce waste.
 - Prevents bubbles in the mix.
- **No Extra Bonding Agent Needed**
 - High compressive, tensile, and shear bond strengths.
 - Excellent bond to enamel and metal; also bonds well to ceramic and composite surfaces of restored teeth.
 - Strong, yet flexes under stress.
 - Simple clean-up. Will not damage tooth.
- **Sustained, Rechargeable Fluoride Released**
 - Prevents secondary caries.
 - Eliminates the need for cosmetic restorations due to enamel damage.
 - Fluoride release is recharged with fluoridated rinse or toothpaste.
- **No Etching Required**
 - Simple technique - fast.
 - No damage to enamel from etching.
- **Place in a Wet Field**
 - Fewer steps. Easy procedure.
 - No cotton rolls or ejectors needed.
- **Superior Handling**
 - Mixes effortlessly.
 - Smooth and creamy, but will not run.



GC Fuji ORTHO BAND is a blue-coloured resin modified glass ionomer for bonding orthodontic bands. It can also be used for the cementation of appliances retained with stainless steel crowns. The **Paste Pak Dispenser** saves time and reduces waste. It delivers consistent mixes every time – no matter how little or large a mix required. Simply adjust the dispenser's metering slide and disperse the exact amount of GC Fuji ORTHO BAND Cement you need with the exact mixing ratio for optimized physical properties.

Physical Properties:

Working time @23°C:	3 minutes, 30 seconds	Compressive Strength @24hrs:	110(9) MPa
Net Setting Time @23°C:	3 minutes in the mouth	Tensile Bond Strength to Bovine Enamel:	8(3) MPa
Total Time (start of mix to final set):	6 minutes, 30 seconds	Shear Bond Strength to Bovine Enamel:	8(2) MPa
Consistency:	29mm	Film Thickness	3um

GC Fuji ORTHO BAND Paste Pak

Order

GC Fuji ORTHO BAND Paste Pak 480.135

Contains: Two Full ORTHO™ BAND Paste Pak Cartridges, one Mixing Pad, one Paste Pak Dispenser and mixing spatula.

Paste Pak Dispenser 480.137

Mixing Pads 480.133

Contains: One Package of 5 Pads. 3"x2-1/2", 50 sheets each.

GC Fuji ORTHO™ BAND 480.136

Paste Pak Refill
Contains: Two 13.3g (72ml) Cartridges

Fuji Spatula 480.134

Case Shown Immediately After Debonding Brackets Bonded with Resin Cement



Case Shown Immediately After Debonding Brackets Bonded with GC Fuji ORTHO BAND



How to Use Fuji ORTHO BAND Paste Pak:

