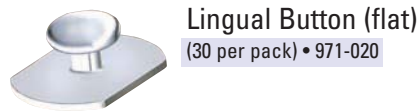


Band and Bracket Auxiliaries

Weldable Lingual Attachments for Band Assemblies

These lingual attachments can be welded to create band assemblies.



Lingual Button (flat)
(30 per pack) • 971-020



Lingual Button (curved)
(30 per pack) • 971-021



Cuspid/Bicuspid Lingual Cleat
(100 per pack) • 971-024



Seating Lugs
(100 per pack)

Bicuspids • 971-027
Molars • 971-028

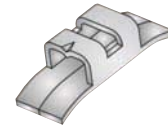


Molar Lingual Cleat
(100 per pack) • 971-025

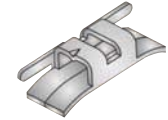
• 972-XXX Denotes attachment to be welded to band.

• 971-XXX Denotes attachment to be sold loose in bag.

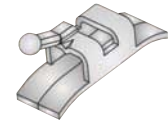
Lingual Sheaths



.036 slotted, horizontal, latching indent. Fits left or right.
(10 per pack)
• 971-032



.036 slotted, horizontal, latching indent hook.
(10 per pack)
UR/LL • 971-034
UL/LR • 971-035



.036 horizontal hook, slotted, latching indent.
(10 per pack)
UR/LL • 971-036
UL/LR • 971-037



With vertical hooks.
(10 per pack)
UR/LL • 971-038
UL/LR • 971-039

Storage & Dispensers

Pre-Packaged Chairside Dispensers



Sliding Bracket Trays & Rack

Call for Pre-loaded Tray Pricing.
Individual Sliding Bracket Trays.
5/16" tall x 5" wide 2-5/8" deep.
(10 per pack).

Empty • 482-006
Sliding Bracket Tray Rack • 482-006R



Chairside Bracket Dispenser

Perfect for dispensing individual patient set-ups. Stores up to 10 cases of brackets. Limits handling and contamination.

4-1/6" x 6-1/6" x 5/6" (brackets not included)
(10 per pack) • 482-001



Safe-T-Bracket Tray™

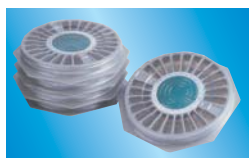
For single patient use. Excellent for transporting brackets to chairside. Adhesive circles hold one complete set-up of brackets and buccal tubes. 7-1/2" x 2-1/2" (brackets not included)
(25 per pack) • 482-002



Band Storage Cabinet

Holds band tray inserts, which can be easily removed for chairside use. Note: Molar trays not included. Trays can be purchased separately. (see below). 11-1/2" x 7-1/4" x 7-1/2"

Cabinet (trays not included) • 482-016
Bracket Tray (Cover • 482-014) • 482-013
Epic™ Band Tray (Cover • 482-012) • 482-011
Tempra™ Band Tray (Cover • 482-017) • 482-018
Primary Molar Tray (Cover • 482-021) • 482-020



Silver Carousel Bracket Trays

Silver with clear cover. Holds either 10 or 50 cases. Twist dial design reduces handling and contamination of brackets, which remain secure and easy to identify and access.

Holds 10 cases (7" x 3/8") • 580-000
Holds 50 cases (6.25" x 5/8") • 482-005



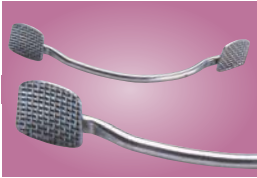
Band or Bracket Leatherette Cases

Attractive cases for storage and dispensing of bands, band assemblies and brackets. Cases are silver.

7" long x 11" wide x 1" tall.

Logo with Band Type on sides (Epic™/Tempra™) • 482-024
Logo - Bracket • 482-025
Logo - Bicuspid Bands • 482-026

Direct Bond Lingual Attachments



Bondable Retainers Lower Cuspid-to-Cuspid (3x3)

Made from heat treatable .032 wire and 80-gauge foil mesh pads for superior bond strength. May be fitted to study model or in some cases directly to patient.



Individual components (5 per pack):

22 mm • 433-022	28 mm • 433-028
24 mm • 433-024	30 mm • 433-030
26 mm • 433-026	

Kit • 433-000 (4 each of size in a convenient dispenser case: 20 total)



Opti-MIM® Direct Bond Button

Nickel-Lite®. Single unit Metal Injection Molded and tailored to conform to tooth surface. Features Grip-LOK® base.

(20 per pack) • 430-002



Opti-MIM® Micro Direct Bond Lingual Button

Nickel-Lite®. Small size allows bonding in hard to access areas. Small radiused head ensures patient comfort and provides room to tie elastics or wires. Features Grip-LOK® base for greater bond strength.

(10 per pack) • 430-001



Opti-MIM® Direct Bond Eyelet

This Nickel-Lite® eyelet can be easily bonded to any tooth. It offers better bond strength and a Grip-LOK® base.

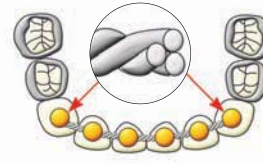
(10 per pack) • 430-005



Opti-MIM® Direct Bond Eyelet with Chain

A great addition to a popular favorite, our eyelet is now available with a 1" length sterling silver chain that can be used full length or trimmed as needed. Strong and completely biocompatible, the chain links are big enough to thread power elastics through to provide traction in the desired direction to expose impacted teeth.

(1 per pack) • 430-005C



Bondable Lingual Retainer Wire

Made of .032" stainless steel in tight twist which will not unravel when cut and facilitates bonding without end loops or bonding pads. Allows for long term stability with physiologic teeth movement. Bond any or all teeth in segment.

7" straight lengths.

(20 per pack) • 433-040



Direct Bond Lingual Cleat

Low-profile design with smooth ball hooks easily adjusted for elastic placement or other treatment purposes.

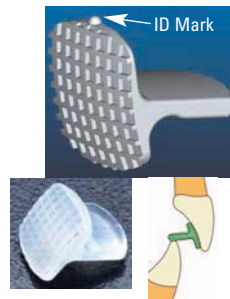
(20 per pack) • 430-004



Direct Bond Lingual Sheath

Foil mesh pad, bonds directly to molars. .036 slotted, horizontal, latching indent. Fits left or right.

(10 per pack) • 971-032DB



Opti-MIM® Bite Guide™

One-piece unit which bonds directly to lingual side of the upper centrals to efficiently open a deep bite and/or advance the mandible. Simply reverse unit with respect to the ID mark for appropriate use. (10 per pack)

Stainless Steel • 430-006

Composite • 430-007



Composite Direct Bond Button

Esthetically pleasing button is smooth and radiused for enhanced patient comfort. Durable and stain resistant, the base is curved for an anatomical fit with dovetailed grooves on base for secure mechanical bond. Bond with any bonding adhesive with no extra primer necessary.

(10 per pack) • 430-000