

Elite® Buccal Tubes

- Available Loose, Direct Bond or Prewelded to Bands
- Super Low-Profile Design
- Metal Injection Molding (MIM) for Exceptional Strength & Precise Accuracy
- Available in Most Popular Prescriptions



A Upper 1st Molar
Convertible Buccal Tube (CBT)
(Gingival Facebow Tube)



B Upper 1st Molar Convertible Buccal
Tube (OCBT)
(Occlusal Facebow Tube)



C Upper 1st Molar Convertible Double
Buccal Tube (DBT)
(Single raised I.D. mark on hook
indicates standard upper 1st molar.
Double raised I.D. marks on hook
indicate Bioprogressive Upper 1st
Molar.)



D Upper 1st Molar Convertible Triple
Buccal Tube (TBT)
(Double raised I.D. marks on hook
indicate Bioprogressive Upper 1st
Molar.)



E Upper 1st Molar Convertible Standard
Buccal Tube (STD)
(Single raised I.D. mark on hook
indicates Standard Upper 1st Molar.)



F Upper 2nd Molar
Mini Buccal Tube
(With distal extension)



G Upper 2nd Molar
Mini Buccal Tube
(Without distal extension)



H Lower 1st Molar
Convertible Standard
Buccal Tube (STD)



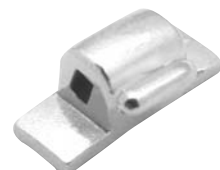
I Lower 1st Molar Convertible Double
Buccal Tube (DBT)



J Lower 1st Molar Convertible Lip
Bumper Tube (LBT)



K Lower 2nd Molar Mini Buccal Tube
(With distal extension: Single raised
I.D. mark on hook indicates Lower
2nd Molar.)



L Lower 2nd Molar
Mini Buccal Tube
(Without distal extension)

Elite® Buccal Tubes

	Description	Torque	Ang.	Offset	Catalogue Numbers				
					.018 / .045		.022 / .045		
					Loose	Direct Bond	Loose	Direct Bond	
Maxillary Prescription									
a) Upper 1st Molar Convertible Molar Tube (CBT) ¹ (Gingival Facebow Tube)		Upper Right	-10°	0°	+10°	900-001	901-001	900-101	901-101
		Upper Left	-10°	0°	+10°	900-002	901-002	900-102	901-102
		Upper Right	-14°	0°	+14°	900-027	901-027	900-127	901-127
		Upper Left	-14°	0°	+14°	900-028	901-028	900-128	901-128
b) Upper 1st Molar Convertible Molar Tube (OCBT) ¹ (Occlusal Facebow Tube)		Upper Right	-10°	0°	+10°	900-003	901-003	900-103	901-103
		Upper Left	-10°	0°	+10°	900-004	901-004	900-104	901-104
		Upper Right	-14°	0°	+14°	900-029	901-029	900-129	901-129
		Upper Left	-14°	0°	+14°	900-030	901-030	900-130	901-130
c) Upper 1st Molar Convertible Double Molar Tube (DBT) (Without Facebow Tube)		Upper Right ²	-10°	0°	+10°	900-017	901-017	900-117	901-117
		Upper Left ²	-10°	0°	+10°	900-018	901-018	900-118	901-118
		Upper Right ³	-14°	0°	+14°	900-019	901-019	900-119	901-119
		Upper Left ³	-14°	0°	+14°	900-020	901-020	900-120	901-120
		Upper Right ⁴	-10°	0°	+10°	900-040	901-040	900-140	901-140
		Upper Left ⁴	-10°	0°	+10°	900-041	901-041	900-141	901-141
Single raised I.D. mark on hook indicates Standard Upper 1st Molar. Double raised I.D. mark on hook indicates Bioprogressive Upper 1st Molar									
d) Upper 1st Molar Convertible Triple Molar Tube (TBT) ¹ (Occlusal Facebow Tube)		Upper Right ²	-10°	0°	+10°	900-005	901-005	900-105	901-105
		Upper Left ²	-10°	0°	+10°	900-006	901-006	900-106	901-106
		Upper Right ³	-14°	0°	+14°	900-009	901-009	900-109	901-109
		Upper Left ³	-14°	0°	+14°	900-010	901-010	900-110	901-110
		Upper Right ⁴	-10°	0°	+10°	900-015	901-015	900-115	901-115
		Upper Left ⁴	-10°	0°	+10°	900-016	901-016	900-116	901-116
Double raised I.D. mark on hook indicates Bioprogressive Upper 1st Molar.									
e) Upper 1st Molar Convertible Molar Tube (STD)		Upper Right	-10°	0°	+10°	900-007	901-007	900-107	901-107
		Upper Left	-10°	0°	+10°	900-008	901-008	900-108	901-108
		Upper Right	-14°	0°	+14°	900-033	901-033	900-133	901-133
		Upper Left	-14°	0°	+14°	900-034	901-034	900-134	901-134
Single raised I.D. mark on hook indicates Standard Upper 1st Molar									
f) Upper 2nd Molar Mini Molar Tube (With distal extension)		Upper Right	-10°	0°	+10°	900-011	901-011	900-111	901-111
		Upper Left	-10°	0°	+10°	900-012	901-012	900-112	901-112
		Upper Right ⁵	-14°	0°	+14°	900-013	901-013	900-113	901-113
		Upper Left ⁵	-14°	0°	+14°	900-014	901-014	900-114	901-114
g) Upper 2nd Mini Molar Tube (Without distal extension)		Upper Right	-10°	0°	+10°	950-033	951-033	950-133	951-133
		Upper Left	-10°	0°	+10°	950-034	951-034	950-134	951-134
		Upper Right	-14°	0°	+14°	950-035	951-035	950-135	951-135
		Upper Left	-14°	0°	+14°	950-036	951-036	950-136	951-136

Elite® Buccal Tubes (continued)

	Description	Torque	Ang.	Offset	Catalogue Numbers				
					.018 / .045		.022 / .045		
					Loose	Direct Bond	Loose	Direct Bond	
Mandibular Prescription									
h) Lower 1st Molar Convertible Standard Molar Tube (STD)		Lower Right	-12°	0°	+4°	900-045	901-045	900-145	901-145
		Lower Left	-12°	0°	+4°	900-046	901-046	900-146	901-146
		Lower Right	-25°	0°	+4°	900-021	901-021	900-121	901-121
		Lower Left	-25°	0°	+4°	900-022	901-022	900-122	901-122
i) Lower 1st Molar Convertible Double Molar Tube (DBT)		Lower Right ⁶	-25°	0°	+4°	900-023	901-023	900-123	901-123
		Lower Left ⁶	-25°	0°	+4°	900-024	901-024	900-124	901-124
		Lower Right ⁷	-25°	0°	+4°	900-025	901-025	900-125	901-125
		Lower Left ⁷	-25°	0°	+4°	900-026	901-026	900-126	901-126
j) Lower 1st Molar Convertible Lip Bumper Tube (LBT)		Lower Right	-25°	0°	+4°	900-043	901-043	900-143	901-143
		Lower Left	-25°	0°	+4°	900-044	901-044	900-144	901-144
k) Lower 2nd Molar Mini Tube (With distal extension)		Lower Right	-12°	0°	+4°	900-051	901-051	900-151	901-151
		Lower Left	-12°	0°	+4°	900-052	901-052	900-152	901-152
		Lower Right ⁸	-25°	0°	+4°	900-031	901-031	900-131	901-131
		Lower Left ⁸	-25°	0°	+4°	900-032	901-032	900-132	901-132
Single raised I.D. mark indicates Lower 2nd Molar.									
l) Lower 2nd Molar Mini Tube (Without distal extension)		Lower Right	-12°	0°	+4°	950-055	951-055	950-155	951-155
		Lower Left	-12°	0°	+4°	950-056	951-056	950-156	951-156
		Lower Right	-25°	0°	+4°	950-053	951-053	950-153	951-153
		Lower Left	-25°	0°	+4°	950-054	951-054	950-154	951-154
1- These upper 1st molar buccal tubes available with .051 facebow tubes on special order basis for a minimum charge.					5- Roth* prescription.				
2- Auxiliary tubes have -10° torque, +10° offset.					6- Roth* prescription, auxiliary tubes have -25° torque, 4° offset.				
3- Roth* prescription, auxiliary tubes have -14° torque, 14° offset.					7- Bioprogressive prescription, auxiliary tubes have 0° torque, 4° offset.				
4- Bioprogressive prescription, auxiliary tubes have 0° torque, 10° offset.					8- Roth* prescription.				

Standard Edgewise Buccal Tubes

- Available Loose, Direct Bond or Prewelded to Bands
- Super Low-Profile Design

	Description	Torque	Ang.	Offset	Catalogue Numbers				
					.018 / .045		.022 / .045		
					Loose	Direct Bond	Loose	Direct Bond	
Maxillary Prescription									
1) Upper 1st Molar Convertible Molar Tube (Gingival Facebow) (CBT) ¹		Upper Right	0°	0°	+10°	926-003	956-045	926-103	956-145
		Upper Left	0°	0°	+10°	926-004	956-046	926-104	956-146
2) Upper 1st Molar Convertible Molar Tube (TBT) ¹		Upper Right	0°	0°	+10°	926-005	956-047	926-105	956-147
		Upper Left	0°	0°	+10°	926-006	956-048	926-106	956-148
3) Upper 2nd Molar Mini Molar Tube (Without distal extension)		Upper Right	0°	0°	+10°	950-013	951-013	950-113	951-113
		Upper Left	0°	0°	+10°	950-014	951-014	950-114	951-114
1- All upper 1st molar tubes are available with custom .051 facebow tubes for a minimum charge.									
Mandibular Prescription									
4) Lower 1st Molar Convertible Standard Molar Tube (STD)		Lower Right	0°	0°	+5°	936-003	952-015	936-103	952-115
		Lower Left	0°	0°	+5°	936-004	952-016	936-104	952-116
5) Lower 1st Molar Convertible Double Molar Tube (DBT)		Lower Right	0°	0°	+5°	926-007	956-015	926-107	956-115
		Lower Left	0°	0°	+5°	926-008	956-016	926-108	956-116
6) Lower 1st Molar Lip Bumper Molar Tube (LBT)		Lower Right	0°	0°	+5°	936-015	—	936-115	—
		Lower Left	0°	0°	+5°	936-016	—	936-116	—
7) Lower 2nd Molar Mini Molar Tube		Lower Right	0°	0°	+5°	950-015	951-015	950-115	951-115
		Lower Left	0°	0°	+5°	950-016	951-016	950-116	951-116
1- These upper 1st molar buccal tubes available with .051 facebow tubes on special order basis for a minimum charge.									

*Ortho Organizers prescription does not imply an endorsement by the doctor.

Elite® *Non-Convertible* Buccal Tubes

- Metal Injection Molded (MIM)
- Available Loose, Direct Bond or Prewelded to Bands
- Low Profile Design and Smooth Surfaces for Enhanced Patient Comfort
- Gingival Ball Hooks for Elastic Wear



A Upper 1st Molar Non-Convertible Standard Buccal Tube (NC-STD)



B Upper 1st Molar Non-Convertible Buccal Tube (NC-CBT) (Gingival Facebow Tube)



C Upper 1st Molar Non-Convertible Double Buccal Tube (NC-DBT)



D Upper 1st Molar Non-Convertible Triple Buccal Tube (NC-TBT)



E Lower 1st Molar Non-Convertible Standard Buccal Tube (NC-STD)



F Lower 1st Molar Non-Convertible Lip Bumper Tube (NC-LBT)



G Lower 1st Molar Non-Convertible Double Buccal Tube (NC-DBT)





Elite® *Non-Convertible* Buccal Tubes

	Description	Torque	Ang.	Offset	Catalogue Numbers				
					.018 / .045		.022 / .045		
					Loose	Direct Bond	Loose	Direct Bond	
Maxillary Prescription									
a) Upper 1st Molar Non-Convertible Standard Buccal Tube (NC-STD)		Upper Right	0°	0°	+6°	902-001	902-001DB	902-101	902-101DB
		Upper Left	0°	0°	+6°	902-002	902-002DB	902-102	902-102DB
		Upper Right	-10°	0°	+6°	902-003	902-003DB	902-103	902-103DB
		Upper Left	-10°	0°	+6°	902-004	902-004DB	902-104	902-104DB
		Upper Right	-14°	0°	+6°	902-005	902-005DB	902-105	902-105DB
		Upper Left	-14°	0°	+6°	902-006	902-006DB	902-106	902-106DB
b) Upper 1st Molar Non-Convertible Buccal Tube (NC-CBT) (Gingival Facebow Tube)		Upper Right	0°	0°	+6°	902-007	902-007DB	902-107	902-107DB
		Upper Left	0°	0°	+6°	902-008	902-008DB	902-108	902-108DB
		Upper Right	-10°	0°	+6°	902-009	902-009DB	902-109	902-109DB
		Upper Left	-10°	0°	+6°	902-010	902-010DB	902-110	902-110DB
		Upper Right	-14°	0°	+6°	902-011	902-011DB	902-111	902-111DB
		Upper Left	-14°	0°	+6°	902-012	902-012DB	902-112	902-112DB
c) Upper 1st Molar Non-Convertible Double Buccal Tube (NC-DBT)		Upper Right	0°	0°	+6°	902-013	902-013DB	902-113	902-113DB
		Upper Left	0°	0°	+6°	902-014	902-014DB	902-114	902-114DB
		Upper Right	-10°	0°	+6°	902-015	902-015DB	902-115	902-115DB
		Upper Left	-10°	0°	+6°	902-016	902-016DB	902-116	902-116DB
		Upper Right	-14°	0°	+6°	902-017	902-017DB	902-117	902-117DB
		Upper Left	-14°	0°	+6°	902-018	902-018DB	902-118	902-118DB
d) Upper 1st Molar Non-Convertible Triple Buccal Tube (NC-TBT)		Upper Right	0°	0°	+6°	902-019	902-019DB	902-119	902-119DB
		Upper Left	0°	0°	+6°	902-020	902-020DB	902-120	902-120DB
		Upper Right	-10°	0°	+6°	902-021	902-021DB	902-121	902-121DB
		Upper Left	-10°	0°	+6°	902-022	902-022DB	902-122	902-122DB
		Upper Right	-14°	0°	+6°	902-023	902-023DB	902-123	902-123DB
		Upper Left	-14°	0°	+6°	902-024	902-024DB	902-124	902-124DB
Mandibular Prescription									
e) Lower 1st Molar Non-Convertible Standard Buccal Tube (NC-STD)		Lower Right	0°	0°	+4°	902-041	902-041DB	902-141	902-141DB
		Lower Left	0°	0°	+4°	902-042	902-042DB	902-142	902-142DB
		Lower Right	-12°	0°	+4°	902-043	902-043DB	902-143	902-143DB
		Lower Left	-12°	0°	+4°	902-044	902-044DB	902-144	902-144DB
		Lower Right	-25°	0°	+4°	902-045	902-045DB	902-145	902-145DB
		Lower Left	-25°	0°	+4°	902-046	902-046DB	902-146	902-146DB
f) Lower 1st Molar Non-Convertible Lip Bumper Tube (NC-LBT)		Lower Right	0°	0°	+4°	902-047	902-047DB	902-147	902-147DB
		Lower Left	0°	0°	+4°	902-048	902-048DB	902-148	902-148DB
		Lower Right	-12°	0°	+4°	902-049	902-049DB	902-149	902-149DB
		Lower Left	-12°	0°	+4°	902-050	902-050DB	902-150	902-150DB
		Lower Right	-25°	0°	+4°	902-051	902-051DB	902-151	902-151DB
		Lower Left	-25°	0°	+4°	902-052	902-052DB	902-152	902-152DB
g) Lower 1st Molar Non-Convertible Double Buccal Tube (NC-DBT)		Lower Right	0°	0°	+4°	902-053	902-053DB	902-153	902-153DB
		Lower Left	0°	0°	+4°	902-054	902-054DB	902-154	902-154DB
		Lower Right	-12°	0°	+4°	902-055	902-055DB	902-155	902-155DB
		Lower Left	-12°	0°	+4°	902-056	902-056DB	902-156	902-156DB
		Lower Right	-25°	0°	+4°	902-057	902-057DB	902-157	902-157DB
		Lower Left	-25°	0°	+4°	902-058	902-058DB	902-158	902-158DB

Elite® Non-Convertible Opti-MIM® Direct Bond Molars



- All Opti-MIM® Molars are Nickel-Lite®
- Metal Injection Molding (MIM) • Grip-LOK® Base



	Description	Torque	Angulation	Offset	Catalogue Numbers	
					.018	.022
 Upper 1st Molar Non-Convertible Buccal Tube (NC-STD)	Upper Right	-10°	0°	+10°	901-401	901-451
	Upper Left	-10°	0°	+10°	901-402	901-452
	Upper Right	-14°	0°	+14°	901-403	901-453
	Upper Left	-14°	0°	+14°	901-404	901-454
 Upper 2nd Molar Non-Convertible Mini Buccal Tube	Upper Right	-10°	0°	+10°	951-205	951-255
	Upper Left	-10°	0°	+10°	951-206	951-256
	Upper Right	-14°	0°	+14°	951-207	951-257
	Upper Left	-14°	0°	+14°	951-208	951-258
May be bonded to first or second molars.						
 Lower 1st Molar Non-Convertible Buccal Tube (NC-STD)	Lower Right	-12°	0°	+4°	901-411	901-461
	Lower Left	-12°	0°	+4°	901-412	901-462
	Lower Right	-25°	0°	+4°	901-413	901-463
	Lower Left	-25°	0°	+4°	901-414	901-464
 Lower 2nd Molar Non-Convertible Mini Buccal Tube	Lower Right	-12°	0°	+4°	951-209	951-259
	Lower Left	-12°	0°	+4°	951-210	951-260
	Lower Right	-25°	0°	+4°	951-211	951-261
	Lower Left	-25°	0°	+4°	951-212	951-262
May be bonded to first or second molars.						

Direct Bond Micro Molars

- Reduced Pad Area with Micro-Etched Grip-LOK® Base
- Defined Buccal Indent for Accurate Placement & Stability

Can be used on the first or second molar. The shorter flanges allow the buccal tube a more precise interface with the tooth. Features a defined buccal indent, which enhances accurate placement and stability.



	Description	Torque	Angulation	Offset	Catalogue Numbers	
					.018	.022
 Upper 1st Molar Non-Convertible Buccal Tube (NC-STD)	Upper Right	-10°	0°	+10°	901-401MP	901-451MP
	Upper Left	-10°	0°	+10°	901-402MP	901-452MP
	Upper Right	-14°	0°	+14°	901-403MP	901-453MP
	Upper Left	-14°	0°	+14°	901-404MP	901-454MP
 Lower 1st Molar Non-Convertible Buccal Tube (NC-STD)	Lower Right	-12°	0°	+4°	901-411MP	901-461MP
	Lower Left	-12°	0°	+4°	901-412MP	901-462MP
	Lower Right	-25°	0°	+4°	901-413MP	901-463MP
	Lower Left	-25°	0°	+4°	901-414MP	901-464MP
May be bonded to first or second molars.						

Direct Bond Solo Tubes

One-piece, one cusp molar buccal tube is about half the length of a traditional buccal tube and is designed to be bonded to the mesial cusp of the 1st or 2nd molar. Compound contour and patented Grip-LOK® micro-etched base create a stable fit for placement and stability.



Description	Torque	Ang.	Offset	.018	.022	Description	Torque	Ang.	Offset	.018	.022
Upper Right	0°	0°	0°	901-501	901-551	Lower Right	0°	0°	0°	901-511	901-561
Upper Left	0°	0°	0°	901-502	901-552	Lower Left	0°	0°	0°	901-512	901-562
Upper Right	-10°	0°	0°	901-503	901-553	Lower Right	-12°	0°	0°	901-513	901-563
Upper Left	-10°	0°	0°	901-504	901-554	Lower Left	-12°	0°	0°	901-514	901-564
						Lower Right	-25°	0°	0°	901-515	901-565
						Lower Left	-25°	0°	0°	901-516	901-566