



Nitanium Palatal Expander²[™]

Multi-Purpose Finishing Appliance

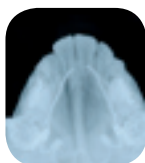
The easy to use *Nitanium Palatal Expander²* takes expansion a step beyond

This extraordinary expansion appliance has the capacity to Rotate, Upright, Distalize and Expand anterior and posterior arch with gentle biocompatible force.

The *Nitanium Palatal Expander²* Appliance's action is the result of transition temperature and shape memory. Warmth within the patient's mouth activates movement in the thermal nickel titanium energy wire toward the appliance's pre-programmed shape. This produces the desired expansion in unison with tooth movement. Once the exact correction is achieved, the appliance stops expanding and lies passive.

- Slower expansion has shown to lower incidents of relapse*
- Thermally-activated *Nitanium*[®] for total control eliminating patient's compliance
- Ease of placement and removal by the doctor
- Orthology arms and loops provide adjustability for fine-tuning and finishing
- No laboratory work is required – available in 10 sizes

Case Study – Patient #96807 Seven Month Progress



3-15-96



4-12-96



6-17-96



8-19-96



10-30-96

Ask for Your Free Copy of these Articles on the *Nitanium Palatal Expander²* Appliance:

"Slow Maxillary Expansion with Nickel Titanium" By Drs. Ravi Nanda and Robert Marzban • 999-162

*"Slow and Continuous Maxillary Expansion, Molar Rotation and Molar Distalization" By Dr. Maurice Corbett • 999-151



Nitanium Palatal Expander² Appliance

Individual Expanders *, ** (1 per pack)

26mm Expander	•	101-761
28mm Expander	•	101-762
30mm Expander	•	101-763
32mm Expander	•	101-764
34mm Expander	•	101-765
36mm Expander	•	101-766
38mm Expander	•	101-767
40mm Expander	•	101-768
42mm Expander	•	101-769
44mm Expander	•	101-770

* For easy identification, each expander has size numbers permanently stamped on the assembly.

** Expanders are for single-use only.

Nitanium Palatal Expander² Appliance Full Range Kit • 101-760

1 expander of each of the following 10 sizes:
26mm, 28mm, 30mm, 32mm, 34mm,
36mm, 38mm, 40mm, 42mm and 44mm
1 can of OrthoFreez (10 oz.)
1 acrylic storage holder
Instruction manual

Nitanium Palatal Expander² Appliance Mid-Range Kit • 101-760M

1 expander of each of the following 5 sizes:
32mm, 34mm, 36mm, 38mm and 40mm
1 can of OrthoFreez (10 oz.)
1 acrylic storage holder
Instruction manual

Individual Components

OrthoFreez (10 oz. can) • 100-788
Expander Adjustment Plier • 200-450

Auxiliary Products

The **Nitanium Palatal Expander²** Appliance simply slips into any of the following weldable Lingual Sheaths.



971-032

.036 slotted, horizontal,
latching indent.
Fits left or right.
(10 per pack)



UR/LL • 971-034 UL/LR • 971-035

.036 slotted, horizontal,
latching indent hook.
(10 per pack)



UR/LL • 971-036 UL/LR • 971-037

.036 horizontal hook,
slotted, latching indent.
(10 per pack)



UR/LL • 971-038 UL/LR • 971-039

.036 vertical hooks.
(10 per pack)

Individual band kits are available with a welded Lingual Sheath and Buccal Tube.

For more information on our products and educational offerings, please contact us:

In the U.S.: 800.547.2000

Outside the U.S.: +1.760.448.8600

Canada: CERUM. 800.661.9567

To fax an order: 800.361.5088

To email an order: cerum@aurumgroup.com

 **A CANADIAN COMPANY** 



115 – 17 Avenue SW
Calgary, AB T2S 0A1
Canada

www.aurumgroup.com