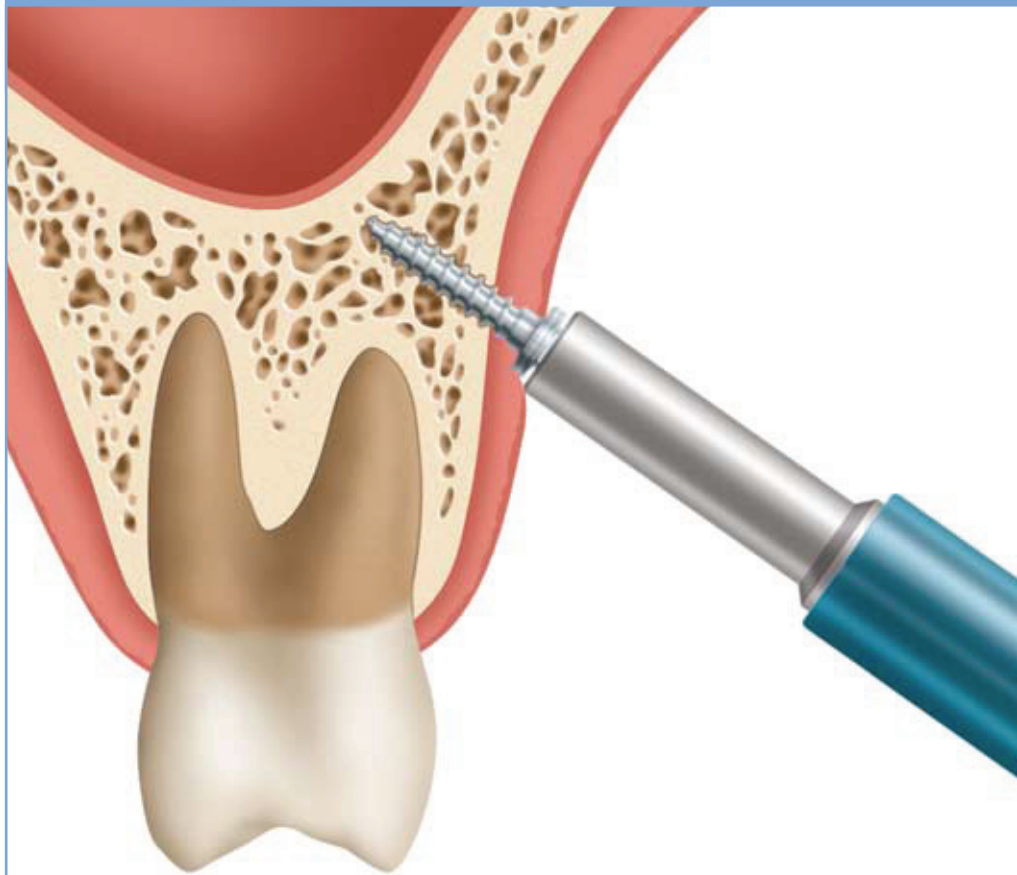




Ancor Pro™

Temporary Orthodontic
Anchorage System

TECHNICAL GUIDE



🇨🇦 A CANADIAN COMPANY 🇨🇦



The *Ancor Pro* Orthodontic Anchorage System by *Ortho Organizers*[®] allows you to have greater control of patient treatment outcomes by providing increased stabilization compared to traditional stabilization techniques.

This technical guide will assist you in the placement and technique of inserting and seating of the *Ancor Pro* Temporary Orthodontic Anchor.

Indications

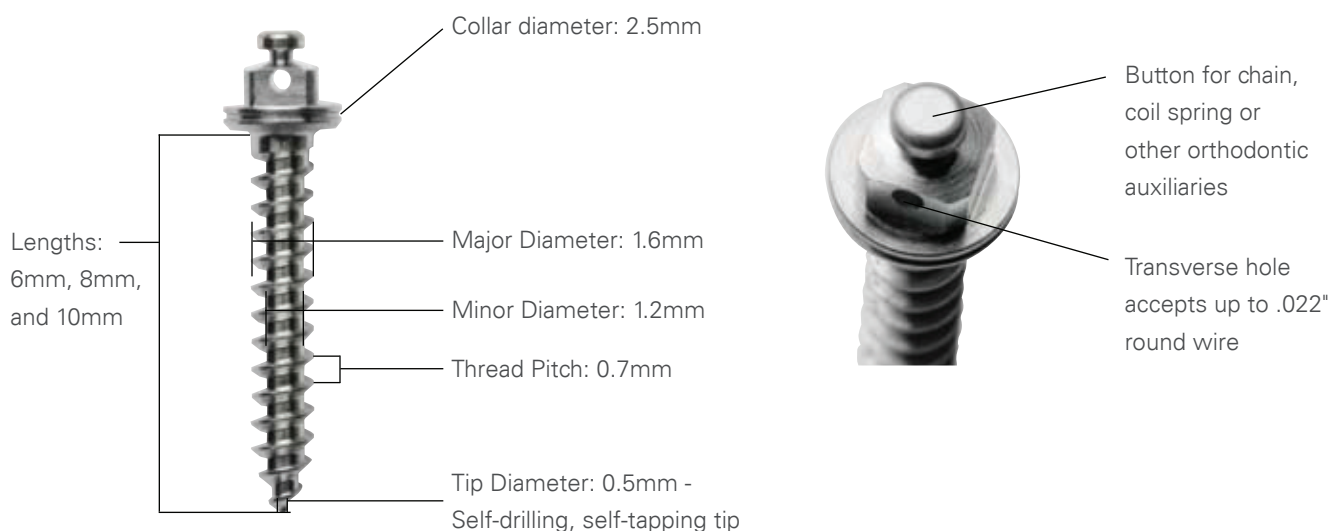
The *Ortho Organizers Ancor Pro* Temporary Orthodontic Anchor is intended to provide a fixed anchorage point for attachment of orthodontic appliances to facilitate the orthodontic movement of teeth*. *Ancor Pro* Anchors can be loaded immediately after placement. They can remain in place for the course of orthodontic treatment (up to 24 months).

Contraindications

Patients with one or more of the following are not candidates for the *Ancor Pro* Temporary Orthodontic Anchor.

- Active, intra-oral infection
- Inadequate bone quantity or quality
- History of metal sensitivities
- History of metabolic disorders
- Active periodontitis
- Radiation therapy regimen

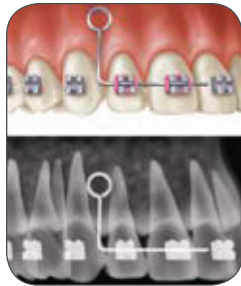
Ancor Pro Anchor Diagram



*For side effects, warnings and further information, please refer to the Instruction for Use.

Step 1 - Determining the Insertion Site

- The insertion site is determined during treatment planning using radiographs, models and clinical findings.
- The insertion site can be easily and accurately marked using the *Ancor Pro* X-Ray Guide.



Step 2 - Anesthetic

- A local or topical anesthetic should be administered to the insertion site.



Step 3 - Pilot Drilling (Optional)

- The *Ancor Pro* Drill is used for drilling. The bone is predrilled at 800 rpm (max. 1500 rpm) using adequate cooling with a physiological saline solution (5°C) to avoid thermal damage to the bone.



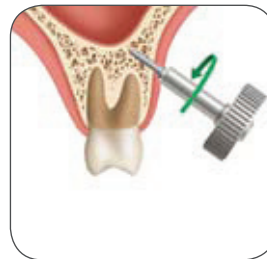
Step 4 - Removing the Anchor

- Connect the *Ancor Pro* Driver to the ratchet, thumbwheel or screwdriver.
- Remove the *Ancor Pro* Anchor from the surgical tray using the driver assembly.



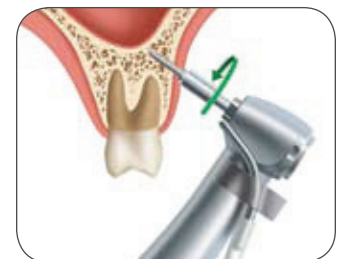
Step 5a - Manual Insertion

- Insert the *Ancor Pro* Anchor into its final position into the bone.



Step 5b - Mechanical Insertion

- Use the latchlock driver and a torque control hand piece (torque 20 ncm and 10-20 rpm) to insert the *Ancor Pro* Anchor to its final position into the bone.



Step 6 - Connecting to the orthodontic appliance

- Finally, connect the *Ancor Pro* Anchor with the orthodontic appliance.

Step 7 - Removing the *Ancor Pro* Anchor

- First remove the connectors to the orthodontic appliance. The *Ancor Pro* Anchor can be removed with the same instruments that were used for insertion.
- The wound does not require any special treatment. It is not essential to administer a local or topical anesthetic.

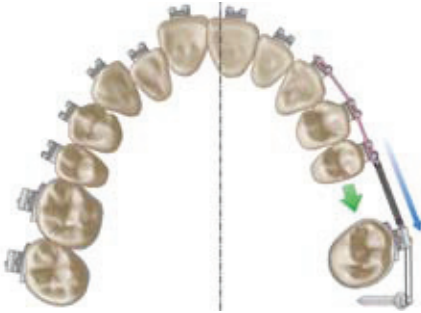


Clinical Cases



Distalization Maxillary

- Following extraction of the upper first bicuspid (premolar).
- Anchors provide the only anchorage.
- In the first stage the cuspid (canine) is uprighted and distalized using traction device.



Distalization Maxillary

- Due to loss of the first molar, space is available to shift the midline by distalization of teeth second bicuspid to central incisor, and simultaneously alleviating anterior crowding in the first quadrant.
- An *Ancor Pro* Anchor is used to anchor second bicuspid.



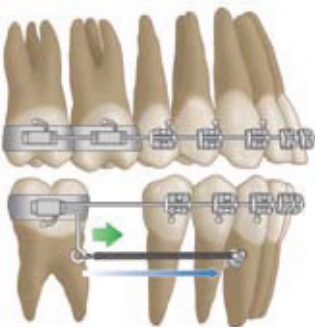
Mesialization Maxillary

- The second molar is moved mesially using a traction device connected directly to an *Ancor Pro* Anchor.
- A transpalatal arch prevents rotation of the tooth and controls mesial movement using first molar.



Preprosthetic Treatment Distalization Mandibular

- Loss of the second molar can be compensated for by distalization of the first molar and then applying a prosthetic restoration.
- The first bicuspid is fixed in position with an *Ancor Pro* Anchor.



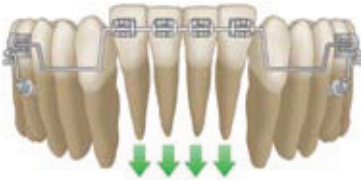
Mesialization Mandibular

- Mesialization of the second molar, e.g. following extraction of the first molar, is carried out using a traction device directly anchored to an *Ancor Pro* Anchor.



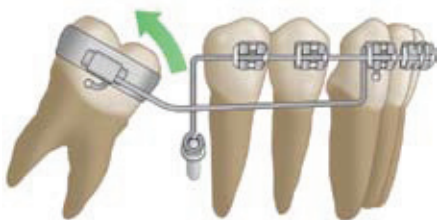
Mesialization Mandibular

- Mesialization of the lower posterior in preparation for surgical correction of a class II.
- *Ancor Pro* Anchors are placed interdentally between cuspids and first bicuspid.



Intrusion Mandibular

- The lower anterior teeth are supra-positioned and are to be intruded.
- The first molars are used as anchorage and fixed in position using *Ancor Pro* Anchors.



Uprighting Mandibular

- Uprighting of second molar.
 - Insertion site: distal of second bicuspid.

For Direct Bond Lingual Attachments, contact a customer service representative at 800.661.0567 or visit our web site at www.aurumgroup.com.



- Mesialization of the bicuspid for space closure.
 - Insertion site: distal of second bicuspid.

Ancor Pro Kit and Individual Components



Ancor Pro Kit

An autoclavable, fully loaded storage case that allows for easy storage of all components while not in use. Kit includes 12 anchors, 2 drivers, 1 latchlock driver, 1 thumbwheel, 1 screwdriver, 12 x-ray placement guides.



Ancor Pro Anchors

Available in three sizes: 6mm, 8mm, and 10mm. (See details on *Ancor Pro Anchor* diagram)



Drivers

Fit screwdriver, manual handle and ratchet wrench. Available in short-6mm and long-12mm. Have internal retentive features to hold *Ancor Pro Anchor* securely.



Latchlock Driver

Used with standard hand pieces to insert *Ancor Pro Anchor*. Has internal retentive feature to hold *Ancor Pro Anchor* securely. Must be used at a very slow speed (10-20 rpm). Can be used to remove *Ancor Pro Anchor* with motor set in reverse.



Thumbwheel

Used with long or short driver insert. Provides good grip to start *Ancor Pro Anchor* in bone.



Screwdriver

Used with long or short driver insert. Can be used for insertion, final seating, or removal of *Ancor Pro Anchor*.



Ratchet (Optional)

Used with long or short driver insert. Can be used for insertion or final seating of *Ancor Pro Anchor*. Arrow faces away from patient to insert *Ancor Pro Anchor*. Arrow faces toward patient to remove *Ancor Pro Anchor*.



Drill

Used for drilling through soft tissue and cortical bone. Largest diameter is 2.4mm - 0.1mm less than collar diameter to ensure snug soft tissue around *Ancor Pro Anchor*.



X-Ray Placement Guide

Used to mark the *Ancor Pro Anchor* insertion site easily and accurately.

For more information on our products and educational offerings, please contact us:
In the U.S.: 800.547.2000
Outside the U.S.: +1.760.448.8600
Canada: CERUM. 800.661.9567
To fax an order: 800.361.5088
To email an order: cerum@aurumgroup.com

©2007 All rights reserved. Ortho Organizers, Inc. PN 999-217 8/07

A CANADIAN COMPANY



115 - 17 Avenue SW
Calgary, AB T2S 0A1
Canada
www.aurumgroup.com