

Orthopedic

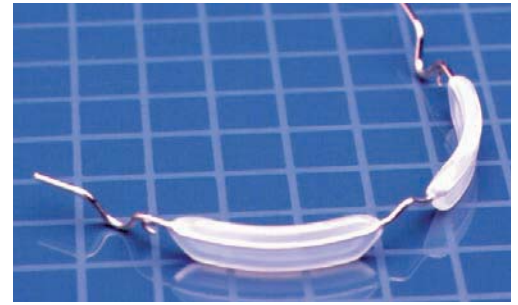
Cushioned Lip Bumpers

Contoured Pad for Patient Comfort

Formed .045" spring tempered stainless steel wire features contoured anterior pad with smooth radiuses. Positive contact with soft tissue provides greater efficiency in distalization and arch development. Pad is slightly flexible for minor anterior wire adjustments. Posterior of wire features adjustable molar loop stops and ligation hooks for tying to molar tubes. Measuring for lip bumpers (cushioned or coated): measure from the distal of the molar omega loop to distal of the omega loop with a white flexi ruler, mm total will be size of lip bumper. 2 per pack.

Available in 7 sizes

Size 1 • 424-021	Size 3 • 424-023	Size 5 • 424-025	Size 7 • 424-027
Size 2 • 424-022	Size 4 • 424-024	Size 6 • 424-026	



Cushioned Lip Bumper Kit
Includes one each of all seven sizes • 424-029

Coated Lip Bumpers

Formed .045" spring tempered stainless steel wire features nylon coated anterior with smooth radiuses for increased patient comfort. Features ligation hooks (that are mesial to the adjustable cuspid loops) that can be used to tie-in buccal tubes. Cuspid loops provide larger lip contact area for increased distal force. Useful in arch expansion, distalizing and uprighting molars. 2 per pack.

Available in 7 sizes

Size 1 • 424-011	Size 3 • 424-013	Size 5 • 424-015	Size 7 • 424-017
Size 2 • 424-012	Size 4 • 424-014	Size 6 • 424-016	

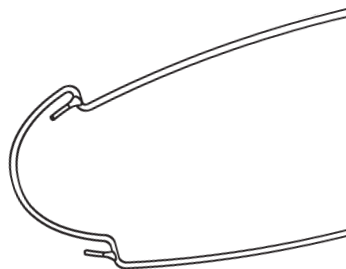


Coated Lip Bumper Starter Kit
Includes one each of all seven sizes • 424-019

Class II Bow™

Designed for use with Class II elastics to distally drive or maintain anchorage of upper molars. Patient acceptance is much higher with Class II Bow over conventional headgear. Pre-soldered with pliable brass hooks for elastic use.

Adjusting loops may be formed in wire, if desired. .045 wire diameter. (10 per pack) • 100-090



Chin Cup

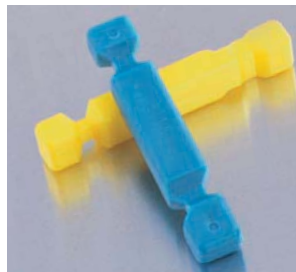
Designed for use with either high-pull or vertical pull headgear. Felt lined for comfort. Rigid plastic cup will not squeeze patient's chin or cheeks. • 426-050



Bite Positioners™

Determines vertical and horizontal plane for orthopedic appliances. Patient bites down with central incisors into selected positioner grooves for proper bite. May also be used to achieve special horizontal and vertical measurements.

1 each: 2mm, 4mm per pack. • 301-010



Orthopedic Wax Bites

Specially designed to achieve appropriate teeth registration for construction of orthopedic appliances.

(27 per box) • 301-021

