

# IMPLANTS

## Prosthetic Technique Series

Side 1. - Single Unit Implants

Side 2. - Multiple Unit Implants on Partially Edentulous Patients

# 4

## Single Unit Implants

### Before Implants Placed

#### 1. Create Surgical Guide

Surgical Guides fabricated by the Aurum Ceramic Implant Team™ ensure extremely precise placement, resulting in greater longevity and more esthetically pleasing implants. A surgical guide can be created before implant placement by either:

- Making a clear duplicate of patient's existing denture *or*;
- Starting a new denture and taking it to try-in stage, then duplicating the try-in in clear acrylic (NOTE: Save try-in for use after implants have integrated). A Crown & Bridge wax-up can also be utilized.



Upper and lower models and a bite are required along with an indication of the proposed implant sites. For simple surgical guides, the Implant Team will drill a hole, place a metal cylinder or cut away the lingual of the tooth in the best position for the implant placement. The clear duplicate can be modified to meet clinician's preferences.



This can also be used as a radiographic guide (depending on clinician's preference, ball bearings, short lengths of wire, barium mixed with acrylic or radio opaque teeth can be placed at the proposed implant sites) for CT scans or x-rays in preparation for implant surgery.



### After Implants Integrated

#### 2. Take Fixture Level Impression

Take preliminary fixture level polyvinyl siloxane impression (NOTE: Open Tray Impression preferred), impression of opposing dentition and bite if possible. Send to Aurum Ceramic accompanied by an x-ray showing the impression copings seated on the implants.



super structure first with a crown over it that has a set screw on the lingual. In this situation, the case will be returned with the superstructure, an orientation matrix for placing the superstructure (both superstructure and matrix will be returned on the model), the crown and a set screw (allowing the crown to remain screw retained albeit at a potentially higher cost than originally planned).



#### 3. Verify Implant Placement

If a screw-retained crown is desired, the implant placement has to be through the occlusal of the posterior teeth or the cingulum of the anterior teeth. This will allow the crown to be fabricated and placed relatively easily.

If there is a divergence in the implants, this may necessitate a change in the overall treatment plan. Early detection of the challenge may still allow the fabrication of a

#### 4. Final Crown Processed

The procedures for custom abutments with cemented crowns are the same with all different types of abutments – whether cast, prepped titanium or Zirconia. The Aurum Ceramic Implant Team will fabricate the abutment, crown and orientation matrix and send the abutment and matrix to the office mounted on the model.



# Multiple Unit Implants on Partially Edentulous Patients

## Before Implants Placed

### 1. Create Surgical Guide

Surgical Guides fabricated by the Aurum Ceramic Implant Team™ ensure extremely precise placement, resulting in greater longevity and more esthetically pleasing implants. A surgical guide can be created before implant placement by either:

- Making a clear duplicate of patient's existing denture *or*;
- Starting a new denture and taking it to try-in stage, then duplicating the try-in in clear acrylic (NOTE: Save try-in for use after implants have integrated). A Crown & Bridge wax-up can also be utilized.



Upper and lower models and a bite are required along with an indication of the proposed implant sites. For simple surgical guides, the Implant Team will drill a hole, place a metal cylinder or cut away the lingual of the tooth in the best position for the implant placement. The clear duplicate can be modified to meet clinician's preferences.

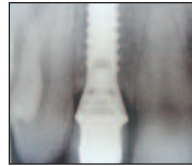
This can also be used as a radiographic guide (depending on clinician's preference, ball bearings, short lengths of wire, barium mixed with acrylic or radio opaque teeth can be placed at the proposed implant sites) for CT scans or x-rays in preparation for implant surgery.



## After Implants Integrated

### 2. Take Fixture Level Impression

Take preliminary fixture level polyvinyl siloxane impression (NOTE: Open Tray Impression preferred), impression of opposing dentition and bite if possible. Send to Aurum Ceramic accompanied by an x-ray showing the impression copings seated on the implants.



### 3. Verification Matrix fabricated based on impression and x-ray

The Aurum Ceramic Implant Team will fabricate a verification matrix consisting of the impression copings luted together with acrylic and then separated with a very thin disc.



### 4. Place Verification Matrix and Take Final Impression

The verification matrix insures exceptional accuracy particularly when working with multiple implants. The matrix is returned in position on the model. Upon receipt, remove from the model and place the separated copings intraorally in the same position, lute the pieces together with Fuji acrylic (less warpage than other acrylics) and take a final Open Tray polyvinyl siloxane (for best accuracy) impression making sure the coping screws are accessible. After the impression has set loosen the screws and remove the impression and return to the lab.

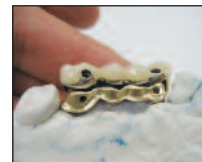
This invaluable step helps ensure the accuracy of the final impression and helps to eliminate the possibility the framework might have to be cut and luted back together at bar try-in stage.

### 5. Verify Implant Placement

If a screw-retained bridge is desired, the implant placement has to be through the occlusal of the posterior teeth or the cingulum of the anterior teeth. This will allow the crown to be fabricated and placed relatively easily.

If there is a divergence in the implants, this may necessitate a change in the overall treatment plan. Early detection of the challenge may still allow the fabrication of a super structure first with a bridge over it that has a set screw on the lingual. In this

situation, the case will be returned with the superstructure, an orientation matrix for placing the superstructure (both superstructure and matrix will be returned on the model), the bridge and a set screw (allowing the bridge to remain screw retained albeit at a potentially higher cost than originally planned).



### 6. Final Bridge Processed

The procedures for custom abutments with cemented bridges are the same with all different types of abutments – whether cast, prepped titanium or Zirconia. The Aurum Ceramic Implant Team will fabricate the abutment, crown and orientation matrix. The orientation matrix will accompany the case to orientate the abutments in the mouth with the same orientation as they had on the master model.

The matrix will arrive in position on the model with the abutments. Remove the abutment screw and remove the abutment and matrix as one unit from the model. Place the abutment and the matrix as one unit into the mouth in the same orientation as on the model. Finger tighten the abutment screw and take an x-ray to verify that the abutment is seated on the implant. Torque the abutment screw to the manufacturers' specifications. Cement crown/bridge.

The prior careful verifications of fit and esthetics will result in a very straightforward insertion appointment.



© Aurum Ceramic Dental Laboratories LLP. (2009). Reproduction of this work in whole or in part, by any means whatsoever, is strictly prohibited without the express written consent of Aurum Ceramic Dental Laboratories LLP.