

PROTECT THAT PERFECT SMILE!

Stop the "Daily Grind"

With Clear-Flex™ and Dual-Flex™ Splints

Experts claim 95% of us grind or clench our teeth (also known as "bruxism"). We may do it under stress, while deep in concentration or when we are angry. It often happens while we are asleep. And, it's an unconscious habit. Most of us don't even realize we are doing it!

The problem? Bruxism can exert as much as 600 pounds of force per square inch (ten times the force of normal chewing). That's enough force to crack a walnut – to say nothing of wearing, chipping or even breaking your teeth and dental restorations.

Now, you can have safe, comfortable "smile insurance" with:

Clear-Flex™

- Indicated for mild bruxing/clenching.
- Entirely constructed of soft material.
- Often used for "clenchers" where the top surface must give under stress.

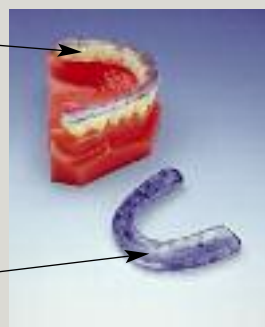
Soft material conforms to your teeth for comfortable, reliable fit.



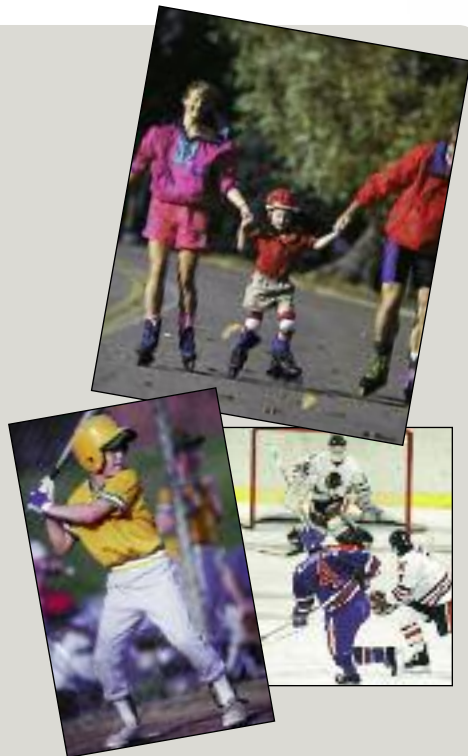
Dual-Flex™

- Indicated for moderate to severe bruxing/clenching.
- Unique, rugged combination of hard and soft materials.
- Soft base is easy to fit and comfortable to wear.
- Hard material takes on stresses of bruxism and eliminates bite through.

Hard outer layer is durable and sparkling clear.



Soft base rests comfortably against teeth and gums.



GIVE YOUR SMILE A SPORTING CHANCE!

With Sports-Flex™ Athletic Mouthguards

Millions of teeth are lost annually across North America during sporting activities. And, injuries can occur at any age: child, teenager or adult. Help protect your family's smiles with high quality, properly fitting Sports-Flex™ Mouthguards – custom-made just for your individual needs by your dental team.

Choose from:

Sports-Flex™ "Super"

- Outstanding protection for high contact activities.
- Constructed using three layers of injection-moulded vinyl.
- Hardened centre layer for extra protection.

Sports-Flex™ "Regular"

- Intended for moderate contact activities.
- Features two layers of injection-moulded vinyl.

Sports-Flex™ "Multi-Purpose"

- Perfect choice for a wide variety of activities.
- Constructed from bonded sheets of injection-moulded, cross-woven vinyl to provide extra strength and resistance to distortion.

YOUR PERSONAL SMILE WISH LIST

How is your smile? Do you like it? Is your mouth comfortable? Are you happy with the colour of your teeth? Do you hold back on laughing or cover your mouth when you do laugh or speak?

Good communication is important to our relationship. The following are some of the common concerns that people have about their smiles. Take a moment to look at your smile in the mirror in a well-lit room and check off any or all of the following that apply to you.

- I wish I didn't feel uncomfortable about my smile.
- I wish my smile was brighter and whiter.
- I wish I could see more of my teeth when I smile.
- I wish my teeth were smaller or larger.
- I wish my smile wasn't so uneven.
- I wish I didn't avoid smiling when someone takes my picture.
- I wish I could fix my broken, missing, crooked, worn or overlapped teeth.
- I wish I could close the gaps and spaces and/or straighten my teeth.
- I wish I didn't show so much gum when I smile.
- I wish my smile was more youthful looking.
- I wish I could get rid of those pointy or rounded teeth.
- I wish I could get rid of those ugly silver fillings.
- I wish my crowns didn't have black lines around the gum.
- I wish that old crown or facing didn't appear so different from my real teeth.
- I wish those metal clasps weren't so visible.

If you checked off any of these items, we can help you create the beautiful, healthy smile you've always wanted. We would be happy to answer all of your questions about your smile. Just give us a call to book a Smile Evaluation appointment at your convenience.

TALK TO YOUR DENTIST FOR MORE INFORMATION

The options listed in this brochure are just a few of the possibilities available today for rejuvenating, restoring and protecting your families beautiful smiles.

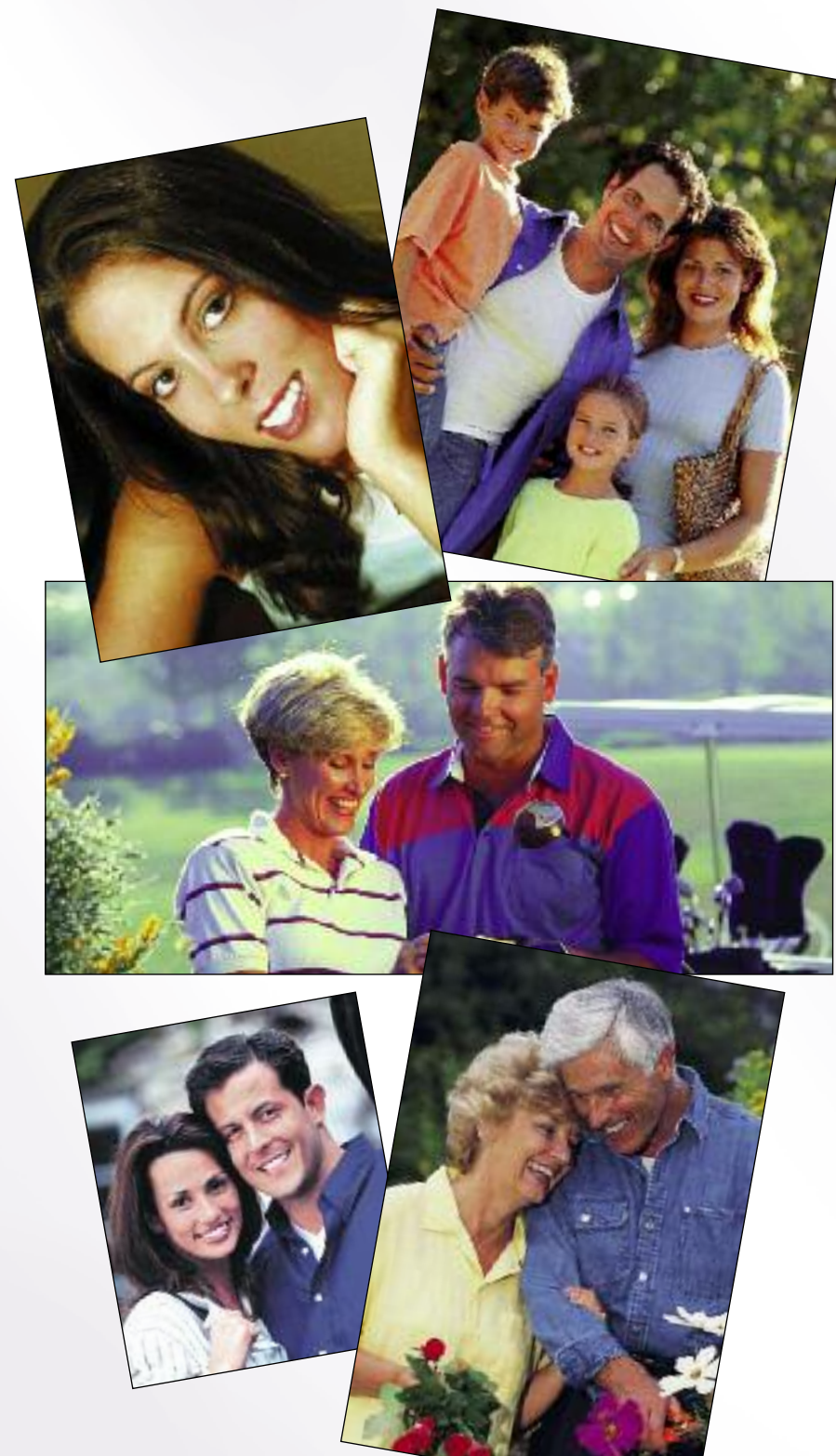
Make an appointment with your dentist for a personal examination or consultation. Together, you can make the best decisions for your long-term dental health, considering your unique set of circumstances.

Please bear in mind that while your preferences and desires are always an important element of consideration, the ultimate choice of technique and type of appliance or restoration should be discussed with the one who knows you best: your dentist.



© Aurum Ceramic Dental Laboratories Co. (2008). Reproduction of this work in whole or in part by any means whatsoever is strictly prohibited without the express written consent of Aurum Ceramic Dental Laboratories Co. All rights reserved.

A beautiful, healthy smile is within your reach



Great options to enhance and protect your smiles!

Today's dental technology offers a wide variety of simple, yet effective, restorative and orthodontic options that create, restore and protect that perfect smile for patients of all ages. With these options, your dental team can straighten teeth; replace missing teeth; eliminate silver fillings; and restore stained, cracked and chipped teeth to their original brilliance. Now, the entire family can have and maintain the beautiful, healthy smiles they've always wanted.



COSMETIC DENTISTRY

Let Us Give You A Dazzling Smile!

We've all admired people with perfect, sparkling smiles. These days people are doing more than simply admiring those pearly whites – they're going to their dentist to get their own!

If you are considering getting your smile in shape, you should know that the new advancements in metal-free cosmetic dentistry offer many safe, affordable choices for both your front and back teeth:

Veneers

Front teeth that are stained, cracked, chipped or have unsightly spaces between them can look as good as new with custom-made laminate veneers.



Tooth-Coloured Inlays/Onlays

Silver-coloured amalgam fillings can now be replaced with attractive, strong tooth-coloured inlays/onlays. Almost impossible to distinguish from the natural tooth, they virtually disappear when placed in the mouth.



All-Ceramic Crowns

Even severely damaged teeth can be restored with esthetic new all-ceramic crowns that are sturdy, healthy and beautiful.



THERE'S EVEN NEW ESTHETIC OPTIONS FOR PARTIAL DENTURE WEARERS!

Eliminate unsightly metal clasps with NaturalFlex™ II

Now, partial denture wearers can have a true "Natural Look" smile with NaturalFlex™ II tooth or tissue-coloured clasps.

- Literally disappears in the mouth.
- Super strong and tough for long life, yet lightweight and flexible for a comfortable fit.
- Non-metal versions also available.

With NaturalFlex™ II Partials, you'll have a lot to smile about.



Completely tooth-borne partial upper denture.



Unsightly old conventional clasp upper partial denture.

Metal-Free Bridges

Even if an entire tooth is missing, metal-free bridges offer the ideal solution. Your dentist can match the colour, appearance and sparkle of your real teeth, so your bridge will blend right in.



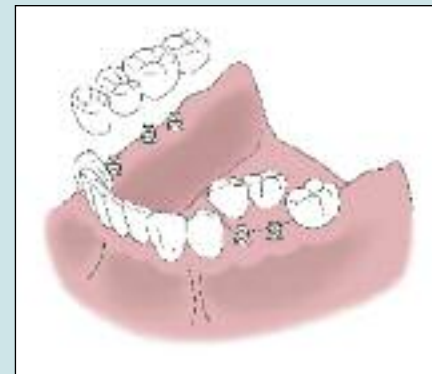
Metal-Free Inlay Bridges

Unlike traditional metal and porcelain, a metal-free inlay bridge does not require the removal of large amounts of healthy tooth structure from your adjoining teeth. The result brings you as close as you can get to the dazzling smile you had before.



Dental Implants

Equally applicable in the upper or lower jaw and at the front or back of the mouth, dental implants provide a permanent anchor for your dentures, crowns or bridges using artificial roots below the gum surface. They offer tremendous improvements in your ability to smile, laugh, talk and chew – without having to remove any remaining healthy tooth structure.



ADULT AND CHILDREN'S ORTHODONTICS

Straight Talk About Crooked Teeth!

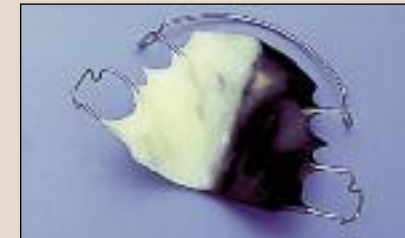
In many instances, it may only require repositioning of your (or your family members') existing teeth to achieve the smile and/or chewing function you are looking for. Even slightly uneven crooked or crowded teeth can affect appearance, bite, and even health.

Fortunately, modern dentistry has a variety of methods for repositioning teeth using "removable" or "fixed" appliances. These appliances gently move the teeth until they are in the desired position. Now, your family can have the smiles they've always wanted through:

Removable Appliance Therapy for Children

Solve many of the challenges the come with growing up by:

- Ensuring valuable adult tooth space is maintained when baby teeth are lost early.
- Correcting simple irregularities with one or more teeth.
- Interceptive Orthodontics to ensure there is enough space for permanent teeth.



Removable Appliance Therapy for Adults

And, it's never too late to correct adult smiles as well through:

- Cosmetic Tooth Movement to reposition one or more front teeth to a more pleasing position.
- Customized Bleaching Trays to get your teeth their whitest.
- Complete alignment of teeth, often with "invisible" appliances.
- Splints that help relieve discomfort from problems relating to your bite, TMJ distress or grinding of teeth at night.
- Completely reversible and non-invasive (i.e., no surgery involved) Snoring appliances that can reduce or even eliminate snoring in most people.



Fixed Appliance Therapy ("Braces")

"Braces" aren't just for kids anymore! More than 20% of today's fixed orthodontic patients are adults! Teeth straightened and realigned with braces:

- Are easier to clean than teeth that are crooked or crowded.
- Promote healthy gums
- Give you a balanced appearance.

