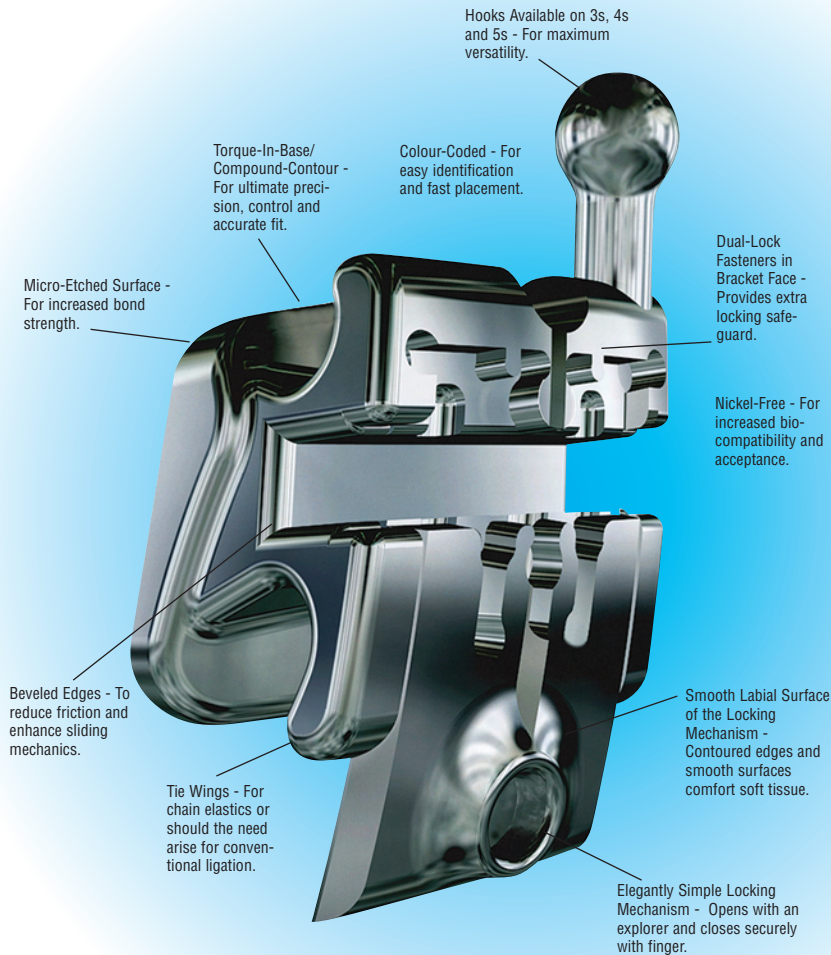


# The Carriere LX<sup>®</sup> Self-Ligating Bracket

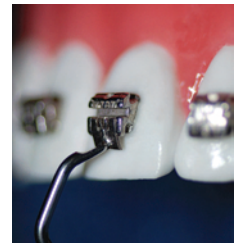
*It's an "Open and Shut" Case!*



## Elegant, Simple Locking Mechanism

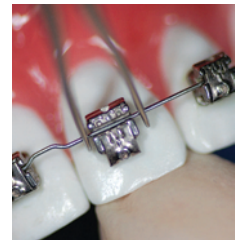
### 1. Open Locking Mechanism

Place tip of Cerum Ortho Organizers' exclusive Wire Director and Opener (or instrument such as an explorer) in opening and apply light incisal/occlusal pressure.



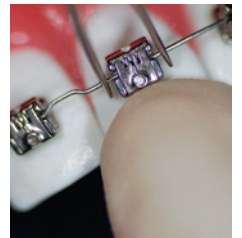
### 2. Seating of the Archwire

Use the forked end of Wire Director and Opener to help seat wire. Fully engage wire before closing the locking mechanism.



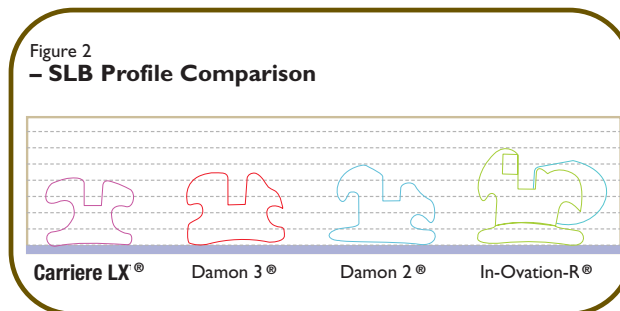
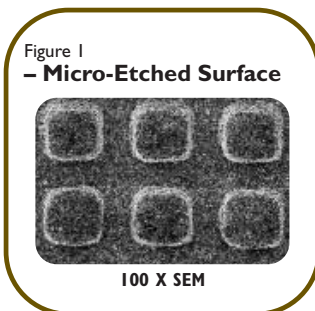
### 3. Closing Locking Mechanism

Close the locking mechanism by pressing the locking mechanism gingivally with your finger.



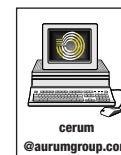
## SLB Profile Comparison

Lowest profile and less bulk in comparison to Damon 2 & 3<sup>™</sup> and In-Ovation-R<sup>®</sup>



## Place Your Order Today!

For more information or to place your order, contact our customer service department from anywhere across Canada by:



The Carriere LX logo are trademarks of Ortho Organizers, Inc.

All other marks registered, including Damon 2, Damon 3, and In-Ovation-R, are the property of their respective owners.