



NEXUS^{IOS}

Full-Arch Rehabilitation Redefined



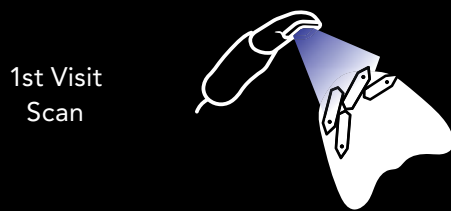
The Complete Digital Workflow

Save Chair Time

Conventional protocols can take up to five patient visits. NEXUS iOS takes only two.
Less chair time, less discomfort and accurate results.

NEXUS iOS offers a better alternative that results in an expertly engineered, industry-leading final prosthesis.

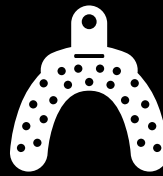
NEXUS iOS



2nd Visit
Final Visit



Conventional



Up to 60% Reduction in Treatment Time

Potential of reducing three or more appointments from your treatment workflow.

What is NEXUS iOS?

A newly created first-of-it's-kind scanning and prosthesis production system.

Streamlining the development of custom, patient-specific full-mouth rehabilitation.
Utilizing Osteon Medical's line of NEXUS prostheses.

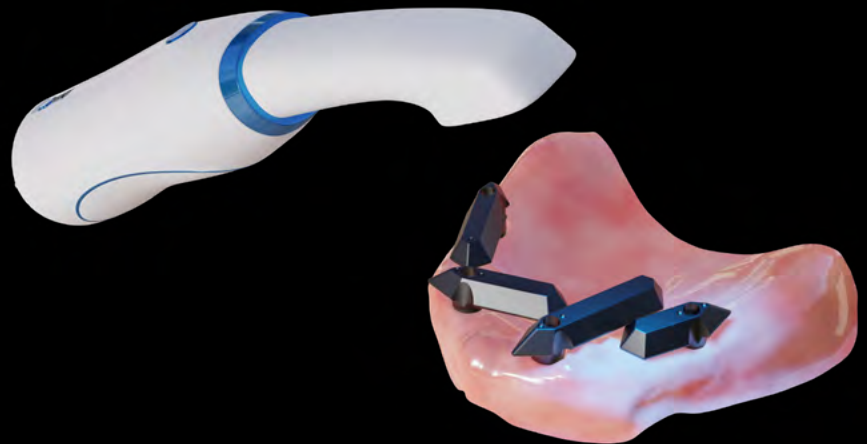
Developed specifically for in-clinic use, from first scan to final insert.

 Scan

 Order & Upload

 Approve

 Receive



How it Works

With the use of NEXUS iOS Scan Gauge technology.

Scan Gauges allow for the capture of accurate intraoral scans that are used to create precise digital full-arch implant impressions.

No physical modeling needed. Compatible with all popular new and existing IO scanners, with a full suite of support offerings.



Scan Patient

Using your IO Scanner and NEXUS Scan Gauges.



Order & Upload

A new NEXUS prosthesis all through the NEXUS Ordering Platform.



Approve

The design of your case in 3D view with optional printed Try-In available.



Receive

Your finished NEXUS definitive case, ready for patient insert.



Lifelike Overlays

All NEXUS iOS cases are finished with expert technical artistry.

NEXUS iOS cases offer high-impact acrylic and monolithic multi-layered Zirconia finishing in a range of production methods to achieve true-to-life features like translucency. Finishing options and specifications can all be specified using the NEXUS ordering platform when uploading case data.

Our designers then provide a 3D file for digital approval, all contained on the cloud-based portal.



Lifetime Hardware Warranty

Using Osteon Medical's industry-leading implant-retained frameworks.

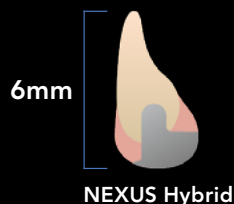
Osteon's titanium hardware underpins all NEXUS iOS prosthetics, with a lifetime warranty. Precision milling means precision patient fit every time.

Covering a range of indications, including:

- NEXUS Hybrid
- NEXUS Bridge
- NEXUS Removable

Limited Occlusal Space

The NEXUS Hybrid can be built to a minimum height of 6mm with monolithic zirconia, while maintaining significant strength.



NEXUS

Scan Gauges

The NEXUS Scan Gauge Kit and an IO scanner is all that is needed to begin performing scans for accurate full-arch rehabilitation.

The NEXUS Scan Gauge Kit is designed specifically for each clinician and their chosen abutment platform. Every kit has a unique identifying number and is associated with a registered NEXUS iOS account.

Each kit contains:

- 18 Scan Gauges in 3 lengths and 2 cuff heights
- 3 Scan Analogs
- 3 Narrow Scan Bodies
- Driver

Unique Libraries

All NEXUS Scan Gauge Kits are designed to stringent engineering tolerances, produced by 5-axis milling machines. After production, exact dimensions of each Scan Gauge are measured and put into a custom library.

This is one of the unique steps that allows NEXUS iOS to ensure a high degree of accuracy.

NEXUS Scan Gauge
3 Sizes & 2 Cuff Heights

Scan Analogs

Narrow Scan Bodies

Serial Number
Each kit is unique, requiring an individual number that is assigned to the clinician's account.



Patient Journey

NEXUS iOS allows for a digital process throughout the entire patient journey.

The NEXUS iOS workflow simply involves a sequence of scans and photos, uploaded to the NEXUS Ordering Platform at each stage of the patient journey.

Pre-Op

- Patient Photos
- Schedule Patient Surgery

Immediate Provisional

- Surgery
- IO Scans
- Download .STL
- Immediate Insert

Final Prosthesis

- Implants Integrated
- New IO Scans
- Order Final
- Final Prosthesis Insert

Global Headquarters

154 Middlesex Turnpike
Burlington, MA 01803, USA
Tel: +1 781-328-3490
Toll-free: 866-902-9272
www.KeystoneDental.com

Global KDG Offices:

USA

KeystoneDentalGroup Irvine
13645 Alton Pkwy
Irvine, CA 92618, USA

Israel

Paltop Advanced Dental Solutions, Ltd.
Hashita 5, Industrial Park P.O. Box 3568
Caesarea 3088900, Israel

Australia

Osteon Medical Headquarters
767 Springvale Road
Mulgrave VIC 3170, Australia

France


Osteon Medical Europe
11 A, Bat B, rue des Aulnes
Champagne au Mont d'or, 69410, France

Japan

Osteon Digital Japan
3-chōme-5-4 Nagayoshi Kawanabe
Hirano Ward, Osaka, 547-0014, Japan

References

1. El-Haddad, H., Judge, R., Abduo, J. and Palamara, J., 2020. Laboratory Evaluation of Novel Implant Metal-Acrylic Prosthesis Design: Influence of Monolithic Acrylic Veneer. *The International Journal of Oral & Maxillofacial Implants*, 35(1), pp.100-106.



Osteon Medical
767 Springvale Road
Mulgrave VIC 3170, Australia



Learn More